

# Recombinant Human GMEB2 Protein, Myc/DDK-tagged, C13 and N15-labeled

Cat. No. GMEB2-2524H Lot. No. (See product label)

## SPECIFICATION

### Product Overview

GMEB2 MS Standard C13 and N15-labeled recombinant protein (NP\_036516) with a C-terminal MYC/DDK tag, was expressed in HEK293 cells.

### Species

Human

### Source

HEK293

### Description

This gene is a member of KDWK gene family. The product of this gene associates with GMEB1 protein, and the complex is essential for parvovirus DNA replication. Study of rat homolog implicates the role of this gene in modulation of transactivation by the glucocorticoid receptor bound to glucocorticoid response elements. This gene appears to use multiple polyadenylation sites.

### Molecular Mass

56.2 kDa

### AA Sequence

MATPDVSVHMEEVVVVTTTPDТАVDGSGVEGVKTVLVTTNLAPHGGDLTEDNMETE  
 NAAAAAAAAAFTASSQLKEAVLVKMAEEGENLEAEIVYPITCGDSRANLIWRKFVCPGI  
 NVKCVQYDEHVISPKEFVHLAGKSTLKDWKRAIRMNGIMLRKIMDSGELDFYQHDKV  
 CSNTCRSTKIDLSGARVSLSSPTSАEYIPLTPAAADVNGSPATITИETCEDPGDWТАAI  
 GDDTFTFWRGLKDAGLLDEVIQEFHQELVETMRGLQQRVQDPPLQLRDAVLLNNIV  
 QNFGMLDLVKKVLASHKCMDRSREQYARDLAALEQQCDEHRRRAKELKHKSQHL  
 SNVLMTLTPVSLPPPVKRPRLARATSGPAAMASQVLTQSAQLALGPGVPVPQLTSV  
 PLGKVVSTLPSTVLGKGSЛQAPPASSPASPLGGYTVLASSGSTYPSTVEIHPDASS

 Tel: 1-631-559-9269 1-516-512-3133

 Email: [info@creative-biomart.com](mailto:info@creative-biomart.com)  Fax: 1-631-938-8127

 45-1 Ramsey Road, Shirley, NY 11967, USA



LTVLSTAAVQDGSTVFKVVSPQLLLTLPGLGPTLQNVAQASPGSSTIVTPAGAAPG  
PEEHTATIEVAAMAEDHERKSGPTRRRLEQKLISEEDLAANDILDYKDDDDKV

**Purity** > 80% as determined by SDS-PAGE and Coomassie blue staining

**Stability** Stable for 3 months from receipt of products under proper storage and handling conditions.

**Storage** Store at -80 centigrade. Avoid repeated freeze-thaw cycles.

**Concentration** 50 µg/mL as determined by BCA

**Storage Buffer** 100 mM glycine, 25 mM Tris-HCl, pH 7.3.

## GENE INFORMATION

**Gene Name** [GMEB2 glucocorticoid modulatory element binding protein 2 \[ Homo sapiens \(human\) \]](#)

**Official Symbol** [GMEB2](#)

**Synonyms** GMEB2; glucocorticoid modulatory element binding protein 2; glucocorticoid modulatory element-binding protein 2; KIAA1269; P79PIF; PIF79; GMEB-2; PIF p79; DNA-binding protein p79PIF; parvovirus initiation factor p79; parvovirus initiation factor, p79;

**Gene ID** [26205](#)

**mRNA Refseq** [NM\\_012384](#)

**Protein Refseq** [NP\\_036516](#)

Tel: 1-631-559-9269 1-516-512-3133

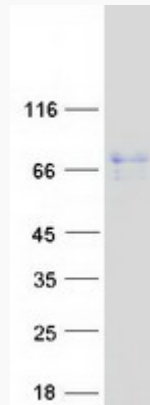
Email: [info@creative-biomart.com](mailto:info@creative-biomart.com) Fax: 1-631-938-8127

45-1 Ramsey Road, Shirley, NY 11967, USA

**MIM** 607451

**UniProt ID** Q9UKD1

**SDS-PAGE**



 Tel: 1-631-559-9269 1-516-512-3133

 Email: [info@creative-biomart.com](mailto:info@creative-biomart.com)  Fax: 1-631-938-8127

 45-1 Ramsey Road, Shirley, NY 11967, USA