

## Recombinant Human GMEB2 Protein, GST-tagged

Cat. No. GMEB2-5008H Lot. No. (See product label)

### SPECIFICATION

|                         |  |
|-------------------------|--|
| <b>Product Overview</b> | Human GMEB2 full-length ORF ( AAH36305, 1 a.a. - 530 a.a.) recombinant protein with GST-tag at N-terminal.   |
| <b>Species</b>          | Human  |
| <b>Source</b>           | Wheat Germ   |
| <b>Description</b>      | This gene is a member of KDWK gene family. The product of this gene associates with GMEB1 protein, and the complex is essential for parvovirus DNA replication. Study of rat homolog implicates the role of this gene in modulation of transactivation by the glucocorticoid receptor bound to glucocorticoid response elements. This gene appears to use multiple polyadenylation sites. [provided by RefSeq]   |
| <b>Molecular Mass</b>   | 84.04 kDa  |
| <b>AA Sequence</b>      | MATPDVSVHMEEVVVVVTPDTAVDGSVGEVKTVLVTTNLAPHGGDLTEDNMETE<br>NAAAAAAAAAFTASSQLKEAVLVKMAEEGENLEAEIVYPITCGDSRANLIWRKFVCPGI<br>NVKCVQYDEHVISPKEFVHLAGKSTLKDWKRAIRMNGIMLRKIMDSGELDFYQHDKV<br>CSNTRCRSTKIDLSGARVSLSSPTSAEYIPLTPAAADVNGSPATITETCEDPGDWTAAI<br>GDDTFTFWRGLKDAGLLDEVIQEFHQELVETMRGLQQRVQDPPLQLRDAVLLNNIV<br>QNFGMLDLVKKVLASHKCMQRSREQYARDLAALEQQCDEHRRRAKELKHKSQHL<br>SNVLMTLTPVSLPPPVKRPLARATSGPAAMASQVLTQSAQLALGPGVVPQLTSV<br>PLGKVVSTLPSTVLGKGSQAPPASSPALLGGYTVLASSGSTYPSTVEIHPDASS<br>LTVLSTAAVQDGSVFKVVSPLQLLTLPLGLPTLQNVAQASPGSSTIVTPAGAAPG |

 Tel: 1-631-559-9269 1-516-512-3133

 Email: [info@creative-biomart.com](mailto:info@creative-biomart.com)  Fax: 1-631-938-8127

 45-1 Ramsey Road, Shirley, NY 11967, USA

PEEHTATIEVAAMAEDHERK

**Applications**

Enzyme-linked Immunoabsorbent Assay  
 Western Blot (Recombinant protein)  
 Antibody Production  
 Protein Array

**Notes**

Best use within three months from the date of receipt of this protein.

**Storage**

Store at -80 centigrade. Aliquot to avoid repeated freezing and thawing.

**Storage Buffer**

50 mM Tris-HCl, 10 mM reduced Glutathione, pH=8.0 in the elution buffer.

## GENE INFORMATION

**Gene Name**

[GMEB2 glucocorticoid modulatory element binding protein 2 \[ Homo sapiens \]](#)

**Official Symbol**

[GMEB2](#)

**Synonyms**

GMEB2; glucocorticoid modulatory element binding protein 2; glucocorticoid modulatory element-binding protein 2; KIAA1269; P79PIF; PIF79; GMEB-2; PIF p79; DNA-binding protein p79PIF; parvovirus initiation factor p79; parvovirus initiation factor, p79;

**Gene ID**

[26205](#)

**mRNA Refseq**

[NM\\_012384](#)

**Protein Refseq**

[NP\\_036516](#)

**MIM**

[607451](#)

 Tel: 1-631-559-9269 1-516-512-3133

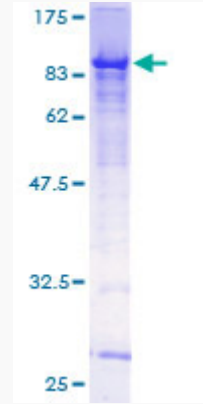
 Email: [info@creative-biomart.com](mailto:info@creative-biomart.com)  Fax: 1-631-938-8127

 45-1 Ramsey Road, Shirley, NY 11967, USA

UniProt ID

Q9UKD1

Quality Control  
Testing



12.5% SDS-PAGE Stained with Coomassie Blue.

 Tel: 1-631-559-9269 1-516-512-3133

 Email: [info@creative-biomart.com](mailto:info@creative-biomart.com)  Fax: 1-631-938-8127

 45-1 Ramsey Road, Shirley, NY 11967, USA