

Recombinant Human GMFB protein

Cat. No. GMFB-2580H Lot. No. (See product label)

SPECIFICATION

Product Overview	Recombinant Human GMF-beta Protein is produced by E. coli expression system. The target protein is expressed with sequence (Ser2-His142) of human GMF-beta (Accession #NP_004115.1).
Species	Human
Source	E.coli
ProteinLength	Ser2-His142
Form	Lyophilized from a 0.22 µm filtered solution of PBS, pH 7.4.
Molecular Mass	18 kDa
Endotoxin	< 0.1 EU/µg of the protein by LAL method.
Purity	> 95% by SDS-PAGE.
Storage	Store the lyophilized protein at -20°C to -80 °C for long term. After reconstitution, the protein solution is stable at -20 °C for 3 months, at 2-8 °C for up to 1 week.
Reconstitution	Reconstitute to a concentration of 0.1-0.5 mg/mL in sterile distilled water.

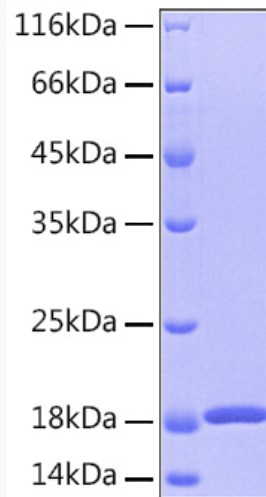
GENE INFORMATION

 Tel: 1-631-559-9269 1-516-512-3133

 Email: info@creative-biomart.com  Fax: 1-631-938-8127

 45-1 Ramsey Road, Shirley, NY 11967, USA

Gene Name	GMFB glia maturation factor, beta [Homo sapiens]
Official Symbol	GMFB
Synonyms	GMFB; glia maturation factor, beta; glia maturation factor beta; GMF; GMF-beta;
Gene ID	2764
mRNA Refseq	NM_004124
Protein Refseq	NP_004115
MIM	601713
UniProt ID	P60983

SDS-PAGE


 Tel: 1-631-559-9269 1-516-512-3133

 Email: info@creative-biomart.com  Fax: 1-631-938-8127

 45-1 Ramsey Road, Shirley, NY 11967, USA