

Recombinant Human GMFB protein

Cat. No. GMFB-26568TH Lot. No. (See product label)

SPECIFICATION

Product Overview	Recombinant Human GMFB protein was expressed in Escherichia coli.
Species	Human
Source	E.coli
ProteinLength	141
Description	The glia maturation factor beta belongs to the actin-binding proteins ADF family, GMF subfamily. It contains an ADF-H domain, but the research of crystallography and NMR reveals that there are structures different between human and mouse ADF-H domain. GMF-β is involved in the differentiation, maintenance, and regeneration of the nervous system. It also inhibition of proliferation of tumor cells.
Form	Lyophilized from a 0.2μm filtered concentrated solution in 20 mM PB, pH 7.4, 130 mM NaCl.
Molecular Mass	Approximately 16.6 kDa, a single non-glycosylated polypeptide chain containing 141 amino acids.
AA Sequence	SESLVVCDDVAEDLVEKLRKFRFRKETNNAAIIMKIDKDKRLVVLDEELEGISPDELKDE LPERQPRFIVYSYKYQHDDGRVSYPLCFIFSSPVGCKPEQQMMYAGSKNKLVTAE LTKVFEIRNTEDLTEEWLREKLGFFH
Endotoxin	Less than 1 EU/μg of rHuGMF-β as determined by LAL method.

 Tel: 1-631-559-9269 1-516-512-3133

 Email: info@creative-biomart.com  Fax: 1-631-938-8127

 45-1 Ramsey Road, Shirley, NY 11967, USA

Purity	>98% by SDS-PAGE and HPLC analysis.
Storage	Use a manual defrost freezer and avoid repeated freeze-thaw cycles. 12 months from date of receipt, -20 to -70 centigrade as supplied. 1 month, 2 to 8 centigrade under sterile conditions after reconstitution. 3 months, -20 to -70 centigrade under sterile conditions after reconstitution.
Reconstitution	We recommend that this vial be briefly centrifuged prior to opening to bring the contents to the bottom. Reconstitute in sterile distilled water or aqueous buffer containing 0.1 % BSA to a concentration of 0.1-1.0 mg/mL. Stock solutions should be apportioned into working aliquots and stored at ≤-20 centigrade. Further dilutions should be made in appropriate buffered solutions.

GENE INFORMATION

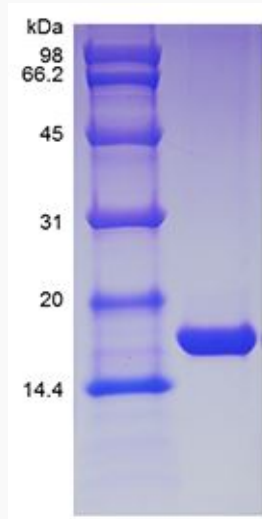
Gene Name	GMFB
Official Symbol	GMFB
Synonyms	GMFB; glia maturation factor, beta; glia maturation factor beta; GMF; GMF-beta;
Gene ID	2764
mRNA Refseq	NM_004124
Protein Refseq	NP_004115
MIM	601713
UniProt ID	P60983

 Tel: 1-631-559-9269 1-516-512-3133

 Email: info@creative-biomart.com  Fax: 1-631-938-8127

 45-1 Ramsey Road, Shirley, NY 11967, USA

**SDS-PAGE of GMFB-
26568TH**



 Tel: 1-631-559-9269 1-516-512-3133

 Email: info@creative-biomart.com  Fax: 1-631-938-8127

 45-1 Ramsey Road, Shirley, NY 11967, USA