

Recombinant Human GMFG Protein, GST-tagged

Cat. No. GMFG-5011H Lot. No. (See product label)

SPECIFICATION

Product Overview	Human GMFG full-length ORF (NP_004868.1, 1 a.a. - 142 a.a.) recombinant protein with GST-tag at N-terminal.
Species	Human
Source	Wheat Germ
Description	GMFG (Glia Maturation Factor Gamma) is a Protein Coding gene. Among its related pathways are GPCR Pathway and Phospholipase-C Pathway. GO annotations related to this gene include actin binding and enzyme activator activity. An important paralog of this gene is GMFB.
Molecular Mass	43.2 kDa
AA Sequence	MSDSL ^V VCEVDPEL ^T EKL ^R KFR ^R KETD ^N AAI ^M KV ^D KDR ^Q MV ^L EEEF ^Q NIS ^P EEL KMEL ^P ER ^Q PR ^F V ^V SY ^K Y ^V HDD ^G R ^V SY ^P LC ^F IF ^S SP ^V G ^C K ^P E ^Q Q ^M MY ^A G ^S KN ^R LV Q ^T AEL ^T K ^V FEI ^R TT ^D DL ^T EAW ^L QE ^K LS ^F FR
Applications	Enzyme-linked Immunoabsorbent Assay Western Blot (Recombinant protein) Antibody Production Protein Array
Notes	Best use within three months from the date of receipt of this protein.

 Tel: 1-631-559-9269 1-516-512-3133

 Email: info@creative-biomart.com  Fax: 1-631-938-8127

 45-1 Ramsey Road, Shirley, NY 11967, USA

Storage Store at -80 centigrade. Aliquot to avoid repeated freezing and thawing.

Storage Buffer 50 mM Tris-HCl, 10 mM reduced Glutathione, pH=8.0 in the elution buffer.

GENE INFORMATION

Gene Name GMFG glia maturation factor, gamma [Homo sapiens]

Official Symbol GMFG

Synonyms GMFG; glia maturation factor, gamma; glia maturation factor gamma; GMF-GAMMA; MGC126867;

Gene ID 9535

mRNA Refseq NM_004877

Protein Refseq NP_004868

MIM 604104

UniProt ID O60234

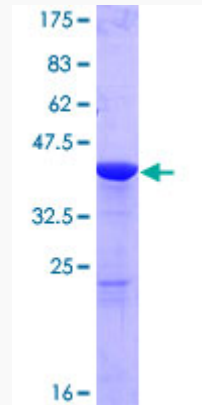
 Tel: 1-631-559-9269 1-516-512-3133

 Email: info@creative-biomart.com  Fax: 1-631-938-8127

 45-1 Ramsey Road, Shirley, NY 11967, USA



Quality Control
Testing



12.5% SDS-PAGE Stained with Coomassie Blue.

Tel: 1-631-559-9269 1-516-512-3133

Email: info@creative-biomart.com Fax: 1-631-938-8127

45-1 Ramsey Road, Shirley, NY 11967, USA