

Recombinant Human GML Protein, GST-tagged

Cat. No. GML-5013H **Lot. No.** (See product label)

SPECIFICATION

Product Overview	Human GML partial ORF (NP_002057, 48 a.a. - 158 a.a.) recombinant protein with GST-tag at N-terminal.
Species	Human
Source	Wheat Germ
Description	GML (Glycosylphosphatidylinositol Anchored Molecule Like) is a Protein Coding gene. Diseases associated with GML include Ainhum and Factor X Deficiency.
Molecular Mass	37.95 kDa
AA Sequence	CPYHIRRCMTISIRINSRELLVYKNCTNNCTFVYAAEQPPEAPGKIFKTNSFYWVCCC NSMVCNAGGPTNLERDMLPDEVTEEELPEGTVRLGVSKLLLSFASIIVSNILP
Applications	Enzyme-linked Immunoabsorbent Assay Western Blot (Recombinant protein) Antibody Production Protein Array
Notes	Best use within three months from the date of receipt of this protein.
Storage	Store at -80 centigrade. Aliquot to avoid repeated freezing and thawing.
Storage Buffer	50 mM Tris-HCl, 10 mM reduced Glutathione, pH=8.0 in the elution buffer.

 Tel: 1-631-559-9269 1-516-512-3133

 Email: info@creative-biomart.com  Fax: 1-631-938-8127

 45-1 Ramsey Road, Shirley, NY 11967, USA

GENE INFORMATION

Gene Name GML glycosylphosphatidylinositol anchored molecule like protein [Homo sapiens]

Official Symbol GML

Synonyms GML; glycosylphosphatidylinositol anchored molecule like protein; GPI anchored molecule like protein; glycosyl-phosphatidylinositol-anchored molecule-like protein; LY6DL; Glycosylphosphatidylinositol-anchored molecule-like protein;

Gene ID 2765

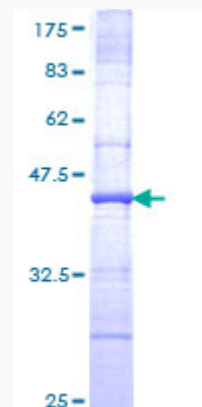
mRNA Refseq NM_002066

Protein Refseq NP_002057

MIM 602370

UniProt ID Q99445

Quality Control Testing



12.5% SDS-PAGE Stained with Coomassie Blue.

 Tel: 1-631-559-9269 1-516-512-3133

 Email: info@creative-biomart.com  Fax: 1-631-938-8127

 45-1 Ramsey Road, Shirley, NY 11967, USA