

Recombinant Human GNA13 protein, GST-tagged

Cat. No. GNA13-187H Lot. No. (See product label)

SPECIFICATION

Product Overview	Recombinant Human GNA13 fused with GST tag at N-terminal was expressed in E. coli.
Species	Human
Source	E.coli
Description	G-alpha 13 (GNA13) is a guanine nucleotide-binding protein of the G12 class of G-alpha proteins. It activates Rho and regulates cytoplasmic as well as nuclear signaling events such as activation of the Jun N-terminal kinase signaling module, Na ⁺ /H ⁺ exchangers, focal adhesion assemblies, and transcriptional activation of specific primary response genes. Like GNA12, GNA13 proteins are found up-regulated in several human cancers, and the GNA12/GNA13 signaling plays an important role in cancer cell invasion and metastasis.
Form	50mM Tris-HCl, pH 7.5, 150mM NaCl, 10mM glutathione, 0.1mM EDTA, 0.25mM DTT, 0.1mM PMSF, 25% glycerol.
Molecular Mass	67 kDa
Purity	>70%
Applications	Enzyme Assay, Western Blot
Stability	1 year at -70 centigrade date of shipment.

 Tel: 1-631-559-9269 1-516-512-3133

 Email: info@creative-biomart.com  Fax: 1-631-938-8127

 45-1 Ramsey Road, Shirley, NY 11967, USA

Storage Store product at –70 centigrade. For optimal storage, aliquot target into smaller quantities after centrifugation and store at recommended temperature. For most favorable performance, avoid repeated handling and multiple freeze/thaw cycles.

Concentration 0.05µg/µl

GENE INFORMATION

Gene Name [GNA13 guanine nucleotide binding protein \(G protein\), alpha 13 \[Homo sapiens \]](#)

Official Symbol [GNA13](#)

Synonyms GNA13; guanine nucleotide binding protein (G protein), alpha 13; guanine nucleotide-binding protein subunit alpha-13; G13; MGC46138; g alpha-13; G-protein subunit alpha-13;

Gene ID [10672](#)

mRNA Refseq [NM_006572](#)

Protein Refseq [NP_006563](#)

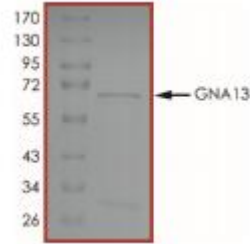
MIM [604406](#)

UniProt ID [Q14344](#)

 Tel: 1-631-559-9269 1-516-512-3133

 Email: info@creative-biomart.com  Fax: 1-631-938-8127

 45-1 Ramsey Road, Shirley, NY 11967, USA



 Tel: 1-631-559-9269 1-516-512-3133

 Email: info@creative-biomart.com  Fax: 1-631-938-8127

 45-1 Ramsey Road, Shirley, NY 11967, USA