

# Recombinant Human GNAS Protein (Met1-Leu394), N-His tagged

**Cat. No.** GNAS-2440H    **Lot. No.** (See product label)

## SPECIFICATION

<b>Product Overview</b>	Recombinant human GNAS (Met1-Leu394) protein fused with the N-His tag was expressed in E. coli.
<b>Species</b>	Human
<b>Source</b>	E.coli
<b>ProteinLength</b>	Met1-Leu394
<b>Description</b>	Guanine nucleotide-binding proteins (G proteins) function as transducers in numerous signaling pathways controlled by G protein-coupled receptors (GPCRs).
<b>Molecular Mass</b>	47.97 kDa
<b>Purity</b>	>90 % as determined by SDS-PAGE.
<b>Notes</b>	For research use only.
<b>Storage</b>	Use a manual defrost freezer and avoid repeated freeze thaw cycles. Store at 2 to 8 centigrade for one week. Store at -20 to -80 centigrade for twelve months from the date of receipt.
<b>Storage Buffer</b>	0.01M PBS, pH 7.4, 0.02 % NLS

 Tel: 1-631-559-9269    1-516-512-3133

 Email: [info@creative-biomart.com](mailto:info@creative-biomart.com)     Fax: 1-631-938-8127

 45-1 Ramsey Road, Shirley, NY 11967, USA

**Reconstitution** Reconstitute in sterile water for a stock solution.

**Shipping** In general, proteins are provided as lyophilized powder/frozen liquid. They are shipped out with dry ice/blue ice unless customers require otherwise.

## GENE INFORMATION

**Gene Name** [GNAS GNAS complex locus \[ Homo sapiens \(human\) \]](#)

**Official Symbol** [GNAS](#)

**Synonyms** GNAS; GNAS complex locus; GNAS1, guanine nucleotide binding protein (G protein), alpha stimulating activity polypeptide 1; protein ALEX; GNASXL; GPSA; NESP; NESP55; SCG6; secretogranin VI; extra large alphas protein; neuroendocrine secretory protein; guanine nucleotide regulatory protein; alternative gene product encoded by XL-exon; adenylate cyclase-stimulating G alpha protein; guanine nucleotide-binding protein G (s) subunit alpha isoforms XLas; guanine nucleotide binding protein (G protein), alpha stimulating activity polypeptide 1; AHO; GSA; GSP; POH; GNAS1; PHP1A; PHP1B; PHP1C; C20orf45; MGC33735;

**Gene ID** [2778](#)

**mRNA Refseq** [NM\\_000516](#)

**Protein Refseq** [NP\\_000507](#)

**MIM** [139320](#)

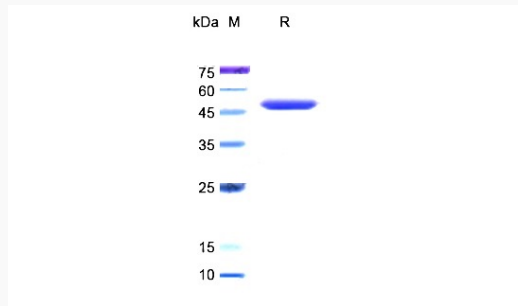
**UniProt ID** [P63092](#)

 Tel: 1-631-559-9269 1-516-512-3133

 Email: [info@creative-biomart.com](mailto:info@creative-biomart.com)  Fax: 1-631-938-8127

 45-1 Ramsey Road, Shirley, NY 11967, USA

**SDS-PAGE**



 Tel: 1-631-559-9269 1-516-512-3133

 Email: [info@creative-biomart.com](mailto:info@creative-biomart.com)  Fax: 1-631-938-8127

 45-1 Ramsey Road, Shirley, NY 11967, USA