

## Recombinant Human GNB1L Protein, GST-tagged

Cat. No. GNB1L-5052H Lot. No. (See product label)

### SPECIFICATION

<b>Product Overview</b>	Human GNB1L full-length ORF ( NP_443730.1, 1 a.a. - 327 a.a.) recombinant protein with GST-tag at N-terminal.
<b>Species</b>	Human
<b>Source</b>	Wheat Germ
<b>Description</b>	<p>This gene encodes a G-protein beta-subunit-like polypeptide which is a member of the WD repeat protein family. WD repeats are minimally conserved regions of approximately 40 amino acids typically bracketed by gly-his and trp-asp (GH-WD), which may facilitate formation of heterotrimeric or multiprotein complexes. Members of this family are involved in a variety of cellular processes, including cell cycle progression, signal transduction, apoptosis, and gene regulation. This protein contains 6 WD repeats and is highly expressed in the heart. The gene maps to the region on chromosome 22q11, which is deleted in DiGeorge syndrome, trisomic in derivative 22 syndrome and tetrasomic in cat-eye syndrome. Therefore, this gene may contribute to the etiology of those disorders. Transcripts from this gene share exons with some transcripts from the C22orf29 gene. [provided by RefSeq</p>
<b>Molecular Mass</b>	62 kDa
<b>AA Sequence</b>	<p>MTAPCPPPPDPQFVLRGTQSPVHALHFCEGAQAQGRPLLFSGSQSGLVHIWSLQ            TRRAVTTLDGHGGQCVTWLQTLPQGRQLLSQGRDLKLCLWDLAEGRSVVDSVCL            ESGVFCRSSILAGGQPRWTLAVPGRGSDEVQILEMPSKTSVCALKPKADAKLGMPM</p>

 Tel: 1-631-559-9269 1-516-512-3133

 Email: [info@creative-biomart.com](mailto:info@creative-biomart.com)  Fax: 1-631-938-8127

 45-1 Ramsey Road, Shirley, NY 11967, USA

CLRLWQADCSSRPLLLAGYEDGSVVLWDVSEQKVCSRIACHEEPVMDLDFDSQKA  
 RGISGSAGKALAVWSLDWQQALQVRGTHELTNPGIAEVTIRPDRKILATAGWDHRIR  
 VFHWRTMQPLAVLAFHSAAVQCVAFTADGLLAAGSKDQRISLWSLYPRA

<b>Applications</b>	Enzyme-linked Immunoabsorbent Assay Western Blot (Recombinant protein) Antibody Production Protein Array
<b>Notes</b>	Best use within three months from the date of receipt of this protein.
<b>Storage</b>	Store at -80 centigrade. Aliquot to avoid repeated freezing and thawing.
<b>Storage Buffer</b>	50 mM Tris-HCl, 10 mM reduced Glutathione, pH=8.0 in the elution buffer.

## GENE INFORMATION

<b>Gene Name</b>	GNB1L guanine nucleotide binding protein (G protein), beta polypeptide 1-like [ Homo sapiens ]
<b>Official Symbol</b>	GNB1L
<b>Synonyms</b>	GY2; FKSG1; WDR14; WDVCF; DGCRK3
<b>Gene ID</b>	54584
<b>mRNA Refseq</b>	NM_053004
<b>Protein Refseq</b>	NP_443730
<b>MIM</b>	610778

 Tel: 1-631-559-9269 1-516-512-3133

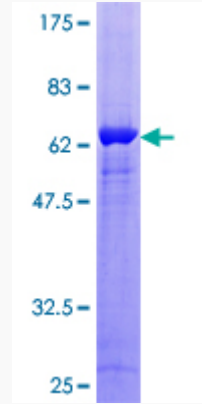
 Email: [info@creative-biomart.com](mailto:info@creative-biomart.com)  Fax: 1-631-938-8127

 45-1 Ramsey Road, Shirley, NY 11967, USA

UniProt ID

Q9BYB4

Quality Control  
Testing



12.5% SDS-PAGE Stained with Coomassie Blue.

 Tel: 1-631-559-9269 1-516-512-3133

 Email: [info@creative-biomart.com](mailto:info@creative-biomart.com)  Fax: 1-631-938-8127

 45-1 Ramsey Road, Shirley, NY 11967, USA