

# Recombinant Human GNB2 Protein (Ser2-Asn340), N-His tagged

**Cat. No.** GNB2-3346H    **Lot. No.** (See product label)

## SPECIFICATION

<b>Product Overview</b>	Recombinant human GNB2 (Ser2-Asn340) protein fused with the N-His tag was expressed in E. coli.
<b>Species</b>	Human
<b>Source</b>	E.coli
<b>ProteinLength</b>	Ser2-Asn340
<b>Molecular Mass</b>	39.51 kDa
<b>Purity</b>	>90 % as determined by SDS-PAGE.
<b>Notes</b>	For research use only.
<b>Storage</b>	Use a manual defrost freezer and avoid repeated freeze thaw cycles. Store at 2 to 8 centigrade for one week. Store at -20 to -80 centigrade for twelve months from the date of receipt.
<b>Storage Buffer</b>	0.01M PBS, pH 7.4, 0.02 % NLS
<b>Reconstitution</b>	Reconstitute in sterile water for a stock solution.
<b>Shipping</b>	In general, proteins are provided as lyophilized powder/frozen liquid. They are

 Tel: 1-631-559-9269    1-516-512-3133

 Email: [info@creative-biomart.com](mailto:info@creative-biomart.com)     Fax: 1-631-938-8127

 45-1 Ramsey Road, Shirley, NY 11967, USA

shipped out with dry ice/blue ice unless customers require otherwise.

## GENE INFORMATION

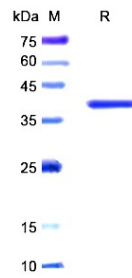
<b>Gene Name</b>	GNB2 guanine nucleotide binding protein (G protein), beta polypeptide 2 [ Homo sapiens (human) ]
<b>Official Symbol</b>	GNB2
<b>Synonyms</b>	GNB2; guanine nucleotide binding protein (G protein), beta polypeptide 2; guanine nucleotide-binding protein G (I) /G (S) /G (T) subunit beta-2; G protein; beta 2 subunit; guanine nucleotide binding protein G (I) /G (S) /G (T) beta subunit 2; signal transducing guanine nucleotide binding regulatory protein beta subunit; transducin beta chain 2; g protein subunit beta-2; G protein, beta-2 subunit; guanine nucleotide-binding protein G (I) /G (S) /G (T) beta subunit 2; signal-transducing guanine nucleotide-binding regulatory protein beta subunit;
<b>Gene ID</b>	2783
<b>mRNA Refseq</b>	NM_005273
<b>Protein Refseq</b>	NP_005264
<b>MIM</b>	139390
<b>UniProt ID</b>	P62879

 Tel: 1-631-559-9269 1-516-512-3133

 Email: [info@creative-biomart.com](mailto:info@creative-biomart.com)  Fax: 1-631-938-8127

 45-1 Ramsey Road, Shirley, NY 11967, USA

**SDS-PAGE**



 Tel: 1-631-559-9269 1-516-512-3133

 Email: [info@creative-biomart.com](mailto:info@creative-biomart.com)  Fax: 1-631-938-8127

 45-1 Ramsey Road, Shirley, NY 11967, USA