

## Recombinant Human GNB4, T7-tagged

Cat. No. GNB4-1537H Lot. No. (See product label)

### SPECIFICATION

<b>Product Overview</b>	Recombinant Human GNB4 was expressed in <i>E. Coli</i> using an N-terminal T7 tag. MW=37.6kDa.
<b>Species</b>	Human
<b>Source</b>	E.coli
<b>Description</b>	Heterotrimeric guanine nucleotide-binding proteins (G proteins), which integrate signals between receptors and effector proteins, are composed of an $\alpha$ , a $\beta$ , and a $\gamma$ subunit. These subunits are encoded by families of related genes. This gene encodes a $\beta$ subunit. $\beta$ subunits are important regulators of $\alpha$ subunits, as well as of certain signal transduction receptors and effectors.
<b>Sequence</b>	1-340.
<b>Purity</b>	~95%.
<b>Specific Activity</b>	n/aH.
<b>Preparation</b>	0.1 mg/0.2 ml.
<b>Applications</b>	E, WB, MS.
<b>Buffer</b>	10 mM Tris, pH 8.0, 0.1% Triton X-100, 0.002% NaN <sub>3</sub> .

 Tel: 1-631-559-9269 1-516-512-3133

 Email: [info@creative-biomart.com](mailto:info@creative-biomart.com)  Fax: 1-631-938-8127

 45-1 Ramsey Road, Shirley, NY 11967, USA

**Storage** Store at -70°C. As with any protein, exposing GNB4 recombinant protein to repeated freeze/thaw cycles is not recommended. When working with proteins care should be taken to keep recombinant protein at a cool and stable temperature.

**SDS-PAGE** SDS PAGE Analysis of GNB4 Recombinant Protein. 4-20% SDS gradient gel. Coomassie blue staining.

## GENE INFORMATION

**Gene Name** [GNB4 guanine nucleotide binding protein \(G protein\), beta polypeptide 4 \[ Homo sapiens \]](#)

**Synonyms** GNB4; guanine nucleotide binding protein (G protein), beta polypeptide 4; guanine nucleotide-binding protein, beta-4 subunit transducin beta chain 4; G protein beta-4 subunit; guanine nucleotide binding protein beta subunit 4

**Gene ID** [59345](#)

**mRNA Refseq** [NM\\_021629](#)

**Protein Refseq** [NP\\_067642](#)

**MIM** [610863](#)

**UniProt ID** [Q9HAV0](#)

**Chromosome Location** 3q26.33

**Pathway** Chemokine signaling pathway; Diabetes pathways; Hemostasis; Integration of energy

 Tel: 1-631-559-9269 1-516-512-3133

 Email: [info@creative-biomart.com](mailto:info@creative-biomart.com)  Fax: 1-631-938-8127

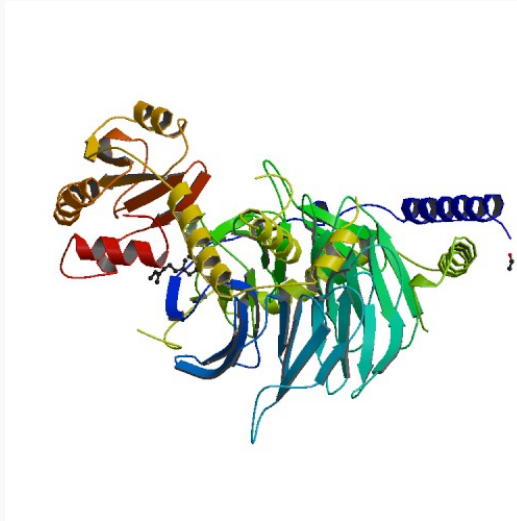
 45-1 Ramsey Road, Shirley, NY 11967, USA

metabolism; Opioid Signalling; Signaling by GPCR

**Function**

signal transducer activity

PDB rendering based  
on 1a0r.



 Tel: 1-631-559-9269 1-516-512-3133

 Email: [info@creative-biomart.com](mailto:info@creative-biomart.com)  Fax: 1-631-938-8127

 45-1 Ramsey Road, Shirley, NY 11967, USA