

Recombinant Human GNE Protein, GST-tagged

Cat. No. GNE-5061H Lot. No. (See product label)

SPECIFICATION

Product Overview	Human GNE full-length ORF (NP_005467.1, 1 a.a. - 722 a.a.) recombinant protein with GST-tag at N-terminal.
Species	Human
Source	Wheat Germ
Description	The protein encoded by this gene is a bifunctional enzyme that initiates and regulates the biosynthesis of N-acetylneuraminic acid (NeuAc), a precursor of sialic acids. It is a rate-limiting enzyme in the sialic acid biosynthetic pathway. Sialic acid modification of cell surface molecules is crucial for their function in many biologic processes, including cell adhesion and signal transduction. Differential sialylation of cell surface molecules is also implicated in the tumorigenicity and metastatic behavior of malignant cells. Mutations in this gene are associated with sialuria, autosomal recessive inclusion body myopathy, and Nonaka myopathy. Alternative splicing of this gene results in transcript variants encoding different isoforms. [provided by RefSeq]
Molecular Mass	105.7 kDa
AA Sequence	MEKNGNRRKLRVCVATCNRADYSKLAPIMFGIKTEPEFFELDVVVLGSHLIDYDYGNT YRMIEQDDFDINTRLHTIVRGEDEAAMVESVGLALVKLPDVLNRLKPDIMIVHGDRFD ALALATSAALMNIRILHIEGGEVSGTIDDSIRHAITKLAHYHVCCTRSAEQHLISMCD HDRILLAGCPSYDKLLSAKNKDYMSIIRMWLGDDVKSVDYIVALQHPVTTDIKHSIKM FELTLDALISFNKRTLVLFPNIDAGSKEMVRVMRKKGIEHHPNFRAVKHVPFDQFIQL

 Tel: 1-631-559-9269 1-516-512-3133

 Email: info@creative-biomart.com  Fax: 1-631-938-8127

 45-1 Ramsey Road, Shirley, NY 11967, USA

VAHAGCMIGNSSCGVREVGAFGTPVINLGTRQIGRETGENVLHVRDADTQDKILQAL
 HLQFGKQYPCSKIYGDGNAVPRILKFLKSIDLQEPLQKKFCPPVKENISQDIDHILET
 LSALAVDLGGTNLRVAIVSMKGEIVKKYTQFNPKTYEERINLILQMCVEAAAEAVKLN
 CRILGVGISTGGRVNPREGIVLHSTKLIQEWNSVDLRTPLSDTLHLPVWVDNDGNCA
 ALAERKFGQGKLENFVTLITGTGIGGGIIHQHELIHGSSFCAAELGHLVVSLDGPDC
 SCGSHGCIEAYASGMALQREAKKLHDEDLLLVEGMSVPKDEAVGALHLIQAACKLN
 AKAQSILRTAGTALGLGVVNILHTMNPSLVILSGVLASHYIHIVKDVIRQQALSSVQDV
 DVVVSDLVDPALLGAASMVLDYTTTRRIY

Applications

Enzyme-linked Immunoabsorbent Assay
 Western Blot (Recombinant protein)
 Antibody Production
 Protein Array

Notes

Best use within three months from the date of receipt of this protein.

Storage

Store at -80 centigrade. Aliquot to avoid repeated freezing and thawing.

Storage Buffer

50 mM Tris-HCl, 10 mM reduced Glutathione, pH=8.0 in the elution buffer.

GENE INFORMATION

Gene Name

[GNE glucosamine \(UDP-N-acetyl\)-2-epimerase/N-acetylmannosamine kinase \[Homo sapiens \]](#)

Official Symbol

[GNE](#)

Synonyms

GNE; glucosamine (UDP-N-acetyl)-2-epimerase/N-acetylmannosamine kinase; IBM2, UDP N acetylglucosamine 2 epimerase/N acetylmannosamine kinase; bifunctional UDP-N-acetylglucosamine 2-epimerase/N-acetylmannosamine kinase; Uae1; N-acetylmannosamine kinase; UDP-GlcNAc-2-epimerase/ManAc kinase; UDP-N-

 Tel: 1-631-559-9269 1-516-512-3133

 Email: info@creative-biomart.com  Fax: 1-631-938-8127

 45-1 Ramsey Road, Shirley, NY 11967, USA

acetylglucosamine 2-epimerase/N-acetylmannosamine kinase; UDP-N-acetylglucosamine-2-epimerase/N-acetylmannosamine kinase; NM; DMRV; IBM2; GLCNE;

Gene ID 10020

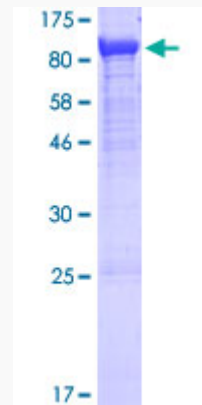
mRNA Refseq NM_001128227

Protein Refseq NP_001121699

MIM 603824

UniProt ID Q9Y223

**Quality Control
Testing**



12.5% SDS-PAGE Stained with Coomassie Blue.

 Tel: 1-631-559-9269 1-516-512-3133

 Email: info@creative-biomart.com  Fax: 1-631-938-8127

 45-1 Ramsey Road, Shirley, NY 11967, USA