

## Recombinant Human GNG12 Protein, GST-tagged

**Cat. No.** GNG12-5066H    **Lot. No.** (See product label)

### SPECIFICATION

<b>Product Overview</b>	Human GNG12 full-length ORF ( NP_061329.3, 1 a.a. - 72 a.a.) recombinant protein with GST-tag at N-terminal.
<b>Species</b>	Human
<b>Source</b>	Wheat Germ
<b>Description</b>	GNG12 (G Protein Subunit Gamma 12) is a Protein Coding gene. Among its related pathways are Aquaporin-mediated transport and Immune response CCR3 signaling in eosinophils. GO annotations related to this gene include signal transducer activity and phosphate ion binding. An important paralog of this gene is GNG7.
<b>Molecular Mass</b>	34.4 kDa
<b>AA Sequence</b>	MSSKTASTNNIAQARRTVQQLRLEASIERIKVSKASADLMSYCEEHARSDPLLIGIPTS ENPFKDKKTCIIL
<b>Applications</b>	Enzyme-linked Immunoabsorbent Assay Western Blot (Recombinant protein) Antibody Production Protein Array
<b>Notes</b>	Best use within three months from the date of receipt of this protein.
<b>Storage</b>	Store at -80 centigrade. Aliquot to avoid repeated freezing and thawing.

 Tel: 1-631-559-9269    1-516-512-3133

 Email: [info@creative-biomart.com](mailto:info@creative-biomart.com)     Fax: 1-631-938-8127

 45-1 Ramsey Road, Shirley, NY 11967, USA

**Storage Buffer** 50 mM Tris-HCl, 10 mM reduced Glutathione, pH=8.0 in the elution buffer.

## GENE INFORMATION

**Gene Name** GNG12 guanine nucleotide binding protein (G protein), gamma 12 [ Homo sapiens ]

**Official Symbol** GNG12

**Synonyms** GNG12; guanine nucleotide binding protein (G protein), gamma 12; guanine nucleotide-binding protein G(I)/G(S)/G(O) subunit gamma-12; G-protein gamma-12 subunit; FLJ31352; FLJ34695;

**Gene ID** 55970

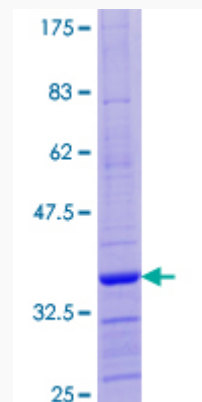
**mRNA Refseq** NM\_018841

**Protein Refseq** NP\_061329

**MIM** 615405

**UniProt ID** Q9UBI6

**Quality Control Testing**



 Tel: 1-631-559-9269 1-516-512-3133

 Email: [info@creative-biomart.com](mailto:info@creative-biomart.com)  Fax: 1-631-938-8127

 45-1 Ramsey Road, Shirley, NY 11967, USA



12.5% SDS-PAGE Stained with Coomassie Blue.

 Tel: 1-631-559-9269 1-516-512-3133

 Email: [info@creative-biomart.com](mailto:info@creative-biomart.com)  Fax: 1-631-938-8127

 45-1 Ramsey Road, Shirley, NY 11967, USA