

Recombinant Full Length Human GNG5 Protein, C-Flag-tagged

Cat. No. GNG5-1174HFL Lot. No. (See product label)

SPECIFICATION

Product Overview	Recombinant Full Length Human GNG5 Protein, fused to Flag-tag at C-terminus, was expressed in Mammalian cells.
Species	Human
Source	Mammalian Cells
Description	G proteins are trimeric (alpha-beta-gamma) membrane-associated proteins that regulate flow of information from cell surface receptors to a variety of internal metabolic effectors. Interaction of a G protein with its activated receptor promotes exchange of GTP for GDP that is bound to the alpha subunit. The alpha-GTP complex dissociates from the beta-gamma heterodimer so that the subunits, in turn, may interact with and regulate effector molecules.
Form	25 mM Tris HCl, pH 7.3, 100 mM glycine, 10% glycerol.
Molecular Mass	7.1 kDa
AA Sequence	MSGSSSVAAMKKVVQQLRLEAGLNRVKVSQAAADLKQFCLQNAQHDPPLLTGVSSS TNPFRPQKVCFLTRTRPLEQKLISEEDLAANDILDYKDDDDKV
Purity	> 80% as determined by SDS-PAGE and Coomassie blue staining.
Stability	Stable for 12 months from the date of receipt of the product under proper storage and handling conditions. Avoid repeated freeze-thaw cycles.

 Tel: 1-631-559-9269 1-516-512-3133

 Email: info@creative-biomart.com  Fax: 1-631-938-8127

 45-1 Ramsey Road, Shirley, NY 11967, USA

Storage	Store at -80 centigrade.
Concentration	>50 ug/mL as determined by microplate BCA method.
Preparation	Recombinant protein was captured through anti-DDK affinity column followed by conventional chromatography steps.
Protein Pathways	Chemokine signaling pathway
Full Length	Full L.

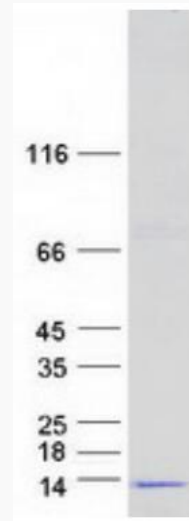
GENE INFORMATION

Gene Name	GNG5 G protein subunit gamma 5 [Homo sapiens (human)]
Official Symbol	GNG5
Synonyms	FLJ92393
Gene ID	2787
mRNA Refseq	NM_005274.3
Protein Refseq	NP_005265.1
MIM	600874
UniProt ID	P63218

 Tel: 1-631-559-9269 1-516-512-3133

 Email: info@creative-biomart.com  Fax: 1-631-938-8127

 45-1 Ramsey Road, Shirley, NY 11967, USA



Coomassie blue staining of purified GNG5 protein.

 Tel: 1-631-559-9269 1-516-512-3133

 Email: info@creative-biomart.com  Fax: 1-631-938-8127

 45-1 Ramsey Road, Shirley, NY 11967, USA