

Recombinant Human GNG5 Protein, GST-tagged

Cat. No. GNG5-5071H Lot. No. (See product label)

SPECIFICATION

Product Overview	Human GNG5 full-length ORF (AAH03563, 1 a.a. - 68 a.a.) recombinant protein with GST-tag at N-terminal.
Species	Human
Source	Wheat Germ
Description	G proteins are trimeric (alpha-beta-gamma) membrane-associated proteins that regulate flow of information from cell surface receptors to a variety of internal metabolic effectors. Interaction of a G protein with its activated receptor promotes exchange of GTP for GDP that is bound to the alpha subunit. The alpha-GTP complex dissociates from the beta-gamma heterodimer so that the subunits, in turn, may interact with and regulate effector molecules (Gilman, 1987 [PubMed 3113327]; summary by Ahmad et al., 1995) [PubMed 7606925].[supplied by OMIM, Nov 2010]
Molecular Mass	33.22 kDa
AA Sequence	MSGSSSVAAMKKVVQQLRLEAGLNRVKVSQAAADLKQFCLQNAQRHDP LLTGVSSTNPF RPQKVCSFL
Applications	Enzyme-linked Immunoabsorbent Assay Western Blot (Recombinant protein) Antibody Production Protein Array

 Tel: 1-631-559-9269 1-516-512-3133

 Email: info@creative-biomart.com  Fax: 1-631-938-8127

 45-1 Ramsey Road, Shirley, NY 11967, USA

Notes	Best use within three months from the date of receipt of this protein.
Storage	Store at -80 centigrade. Aliquot to avoid repeated freezing and thawing.
Storage Buffer	50 mM Tris-HCl, 10 mM reduced Glutathione, pH=8.0 in the elution buffer.

GENE INFORMATION

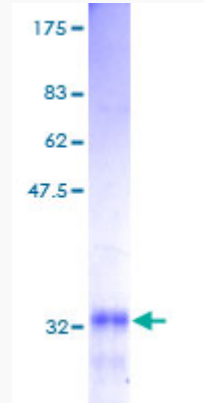
Gene Name	GNG5 guanine nucleotide binding protein (G protein), gamma 5 [Homo sapiens]
Official Symbol	GNG5
Synonyms	GNG5; guanine nucleotide binding protein (G protein), gamma 5; guanine nucleotide-binding protein G(I)/G(S)/G(O) subunit gamma-5; FLJ92393;
Gene ID	2787
mRNA Refseq	NM_005274
Protein Refseq	NP_005265
MIM	600874
UniProt ID	P63218

 Tel: 1-631-559-9269 1-516-512-3133

 Email: info@creative-biomart.com  Fax: 1-631-938-8127

 45-1 Ramsey Road, Shirley, NY 11967, USA

**Quality Control
Testing**



12.5% SDS-PAGE Stained with Coomassie Blue.

 Tel: 1-631-559-9269 1-516-512-3133

 Email: info@creative-biomart.com  Fax: 1-631-938-8127

 45-1 Ramsey Road, Shirley, NY 11967, USA