

# Recombinant Human GNG7 Protein, Myc/DDK-tagged, C13 and N15-labeled

**Cat. No.** GNG7-6287H    **Lot. No.** (See product label)

## SPECIFICATION

<b>Product Overview</b>	GNG7 MS Standard C13 and N15-labeled recombinant protein (NP_443079) with a C-terminal MYC/DDK tag, was expressed in HEK293 cells.
<b>Species</b>	Human
<b>Source</b>	HEK293
<b>Description</b>	Guanine nucleotide-binding proteins (G proteins) are involved as a modulator or transducer in various transmembrane signaling systems. The beta and gamma chains are required for the GTPase activity, for replacement of GDP by GTP, and for G protein-effector interaction. Plays a role in the regulation of adenylyl cyclase signaling in certain regions of the brain. Plays a role in the formation or stabilization of a G protein heterotrimer (G(olf) subunit alpha-beta-gamma-7) that is required for adenylyl cyclase activity in the striatum.
<b>Molecular Mass</b>	7.5 kDa
<b>AA Sequence</b>	MSATNNIAQARKLVEQLRIEAGIERIKVSKAASDLMSYCEQHARNDPLLVGVPASEN PFKDKKPCILTRTRPLEQKLISEEDLAANDILDYKDDDDKV
<b>Purity</b>	> 80% as determined by SDS-PAGE and Coomassie blue staining
<b>Stability</b>	Stable for 3 months from receipt of products under proper storage and handling conditions.

 Tel: 1-631-559-9269    1-516-512-3133

 Email: [info@creative-biomart.com](mailto:info@creative-biomart.com)     Fax: 1-631-938-8127

 45-1 Ramsey Road, Shirley, NY 11967, USA

<b>Storage</b>	Store at -80 centigrade. Avoid repeated freeze-thaw cycles.
<b>Concentration</b>	50 µg/mL as determined by BCA
<b>Storage Buffer</b>	100 mM glycine, 25 mM Tris-HCl, pH 7.3.

## GENE INFORMATION

<b>Gene Name</b>	GNG7 G protein subunit gamma 7 [ Homo sapiens (human) ]
<b>Official Symbol</b>	GNG7
<b>Synonyms</b>	GNG7; guanine nucleotide binding protein (G protein), gamma 7; guanine nucleotide-binding protein G(I)/G(S)/G(O) subunit gamma-7; FLJ00058;
<b>Gene ID</b>	2788
<b>mRNA Refseq</b>	NM_052847
<b>Protein Refseq</b>	NP_443079
<b>MIM</b>	604430
<b>UniProt ID</b>	O60262

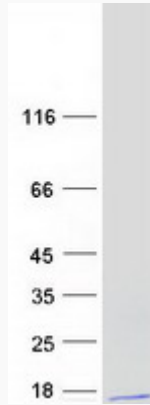
 Tel: 1-631-559-9269 1-516-512-3133

 Email: [info@creative-biomart.com](mailto:info@creative-biomart.com)  Fax: 1-631-938-8127

 45-1 Ramsey Road, Shirley, NY 11967, USA



SDS-PAGE



Tel: 1-631-559-9269 1-516-512-3133

Email: [info@creative-biomart.com](mailto:info@creative-biomart.com) Fax: 1-631-938-8127

45-1 Ramsey Road, Shirley, NY 11967, USA