

# Recombinant Human GNGT1 Protein, Myc/DDK-tagged, C13 and N15-labeled

**Cat. No.** GNGT1-3487H    **Lot. No.** (See product label)

## SPECIFICATION

<b>Product Overview</b>	GNGT1 MS Standard C13 and N15-labeled recombinant protein (NP_068774) with a C-terminal MYC/DDK tag, was expressed in HEK293 cells.
<b>Species</b>	Human
<b>Source</b>	HEK293
<b>Description</b>	This gene encodes the gamma subunit of transducin, a guanine nucleotide-binding protein (G protein) that is found in rod outer segments. Transducin, also known as GMPase, mediates the activation of a cyclic GTP-specific (guanosine monophosphate) phosphodiesterase by rhodopsin.
<b>Molecular Mass</b>	8.5 kDa
<b>AA Sequence</b>	MPVINIEDLTEKDKLKMEVDQLKKEVTLERMLVSKCCEEVRDYVEERSGEDPLVKGI PEDKNPFKELKGGCVISTRTRPLEQKLISEEDLAANDILDYKDDDDKV
<b>Purity</b>	> 80% as determined by SDS-PAGE and Coomassie blue staining
<b>Stability</b>	Stable for 3 months from receipt of products under proper storage and handling conditions.
<b>Storage</b>	Store at -80 centigrade. Avoid repeated freeze-thaw cycles.

 Tel: 1-631-559-9269    1-516-512-3133

 Email: [info@creative-biomart.com](mailto:info@creative-biomart.com)     Fax: 1-631-938-8127

 45-1 Ramsey Road, Shirley, NY 11967, USA

**Concentration** 50 µg/mL as determined by BCA

**Storage Buffer** 100 mM glycine, 25 mM Tris-HCl, pH 7.3.

## GENE INFORMATION

**Gene Name** GNGT1 G protein subunit gamma transducin 1 [ Homo sapiens (human) ]

**Official Symbol** GNGT1

**Synonyms** GNGT1; guanine nucleotide binding protein (G protein), gamma transducing activity polypeptide 1; guanine nucleotide-binding protein G(T) subunit gamma-T1; GNG1; transducin gamma chain;

**Gene ID** 2792

**mRNA Refseq** NM\_021955

**Protein Refseq** NP\_068774

**MIM** 189970

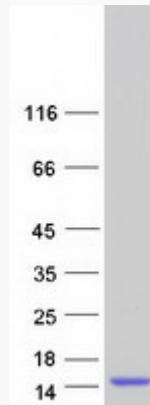
**UniProt ID** P63211

 Tel: 1-631-559-9269 1-516-512-3133

 Email: [info@creative-biomart.com](mailto:info@creative-biomart.com)  Fax: 1-631-938-8127

 45-1 Ramsey Road, Shirley, NY 11967, USA

**SDS-PAGE**



 Tel: 1-631-559-9269 1-516-512-3133

 Email: [info@creative-biomart.com](mailto:info@creative-biomart.com)  Fax: 1-631-938-8127

 45-1 Ramsey Road, Shirley, NY 11967, USA