

Recombinant Human GNGT1 Protein, GST-tagged

Cat. No. GNGT1-5076H Lot. No. (See product label)

SPECIFICATION

Product Overview	Human GNGT1 full-length ORF (AAH29367, 1 a.a. - 74 a.a.) recombinant protein with GST-tag at N-terminal.
Species	Human
Source	Wheat Germ
Description	Heterotrimeric guanine nucleotide-binding proteins (G proteins) transduce extracellular signals received by transmembrane receptors to effector proteins. Transducin is a guanine nucleotide-binding protein found specifically in rod outer segments, where it mediates activation by rhodopsin of a cyclic GTP-specific (guanosine monophosphate) phosphodiesterase. Transducin is also referred to as GMPase. GNGT1 encodes the gamma subunit of transducin (Hurley et al., 1984 [PubMed 6438626]; Scherer et al., 1996 [PubMed 8661128]).[supplied by OMIM
Molecular Mass	33.88 kDa
AA Sequence	MPVINIEDLTEKDKLKMEVDQLKKEVTLERMLVSKCCEEVRDYVEERSGEDPLVKGI PEDKNPFKELKGGCVIS
Applications	Enzyme-linked Immunoabsorbent Assay Western Blot (Recombinant protein) Antibody Production Protein Array

 Tel: 1-631-559-9269 1-516-512-3133

 Email: info@creative-biomart.com  Fax: 1-631-938-8127

 45-1 Ramsey Road, Shirley, NY 11967, USA

Notes	Best use within three months from the date of receipt of this protein.
Storage	Store at -80 centigrade. Aliquot to avoid repeated freezing and thawing.
Storage Buffer	50 mM Tris-HCl, 10 mM reduced Glutathione, pH=8.0 in the elution buffer.

GENE INFORMATION

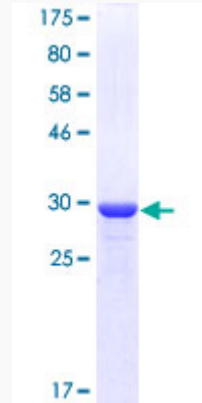
Gene Name	GNGT1 guanine nucleotide binding protein (G protein), gamma transducing activity polypeptide 1 [Homo sapiens]
Official Symbol	GNGT1
Synonyms	GNGT1; guanine nucleotide binding protein (G protein), gamma transducing activity polypeptide 1; guanine nucleotide-binding protein G(T) subunit gamma-T1; GNG1; transducin gamma chain;
Gene ID	2792
mRNA Refseq	NM_021955
Protein Refseq	NP_068774
MIM	189970
UniProt ID	P63211

 Tel: 1-631-559-9269 1-516-512-3133

 Email: info@creative-biomart.com  Fax: 1-631-938-8127

 45-1 Ramsey Road, Shirley, NY 11967, USA

**Quality Control
Testing**



12.5% SDS-PAGE Stained with Coomassie Blue.

 Tel: 1-631-559-9269 1-516-512-3133

 Email: info@creative-biomart.com  Fax: 1-631-938-8127

 45-1 Ramsey Road, Shirley, NY 11967, USA