

Recombinant Human GNGT2 Protein, Myc/DDK-tagged, C13 and N15-labeled

Cat. No. GNGT2-1503H **Lot. No.** (See product label)

SPECIFICATION

Product Overview	GNGT2 MS Standard C13 and N15-labeled recombinant protein (NP_113686) with a C-terminal MYC/DDK tag, was expressed in HEK293 cells.
Species	Human
Source	HEK293
Description	Phototransduction in rod and cone photoreceptors is regulated by groups of signaling proteins. The encoded protein is thought to play a crucial role in cone phototransduction. It belongs to the G protein gamma family and localized specifically in cones. Several transcript variants encoding the same protein have been found for this gene.
Molecular Mass	7.7 kDa
AA Sequence	MAQDLSEKDLLKMEVEQLKKEVKNTRIPISKAGKEIKEIYVEAQAGNDPFLKGIPEDKN PFKEKGGCLISTRTRPLEQKLISEEDLAANDILDYKDDDDKV
Purity	> 80% as determined by SDS-PAGE and Coomassie blue staining
Stability	Stable for 3 months from receipt of products under proper storage and handling conditions.
Storage	Store at -80 centigrade. Avoid repeated freeze-thaw cycles.

 Tel: 1-631-559-9269 1-516-512-3133

 Email: info@creative-biomart.com  Fax: 1-631-938-8127

 45-1 Ramsey Road, Shirley, NY 11967, USA

Concentration 50 µg/mL as determined by BCA

Storage Buffer 100 mM glycine, 25 mM Tris-HCl, pH 7.3.

GENE INFORMATION

Gene Name [GNGT2 G protein subunit gamma transducin 2 \[Homo sapiens \(human\) \]](#)

Official Symbol [GNGT2](#)

Synonyms

GNGT2; guanine nucleotide binding protein (G protein), gamma transducing activity polypeptide 2; guanine nucleotide-binding protein G(I)/G(S)/G(O) subunit gamma-T2; GNG9; G-gamma-9; g gamma-C; gamma-T2 subunit; G protein cone gamma 8 subunit; guanine nucleotide binding protein gamma 9; guanine nucleotide binding protein gamma transducing activity polypeptide 2; GNG8; NGGT8; G-GAMMA-8; G-GAMMA-C;

Gene ID [2793](#)

mRNA Refseq [NM_031498](#)

Protein Refseq [NP_113686](#)

MIM [139391](#)

UniProt ID [O14610](#)

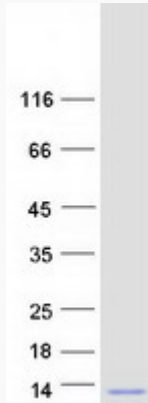
 Tel: 1-631-559-9269 1-516-512-3133

 Email: info@creative-biomart.com  Fax: 1-631-938-8127

 45-1 Ramsey Road, Shirley, NY 11967, USA



SDS-PAGE



Tel: 1-631-559-9269 1-516-512-3133

Email: info@creative-biomart.com Fax: 1-631-938-8127

45-1 Ramsey Road, Shirley, NY 11967, USA