

# Recombinant Human GNL1 Protein, Myc/DDK-tagged, C13 and N15-labeled

**Cat. No.** GNL1-1182H    **Lot. No.** (See product label)

## SPECIFICATION

<b>Product Overview</b>	GNL1 MS Standard C13 and N15-labeled recombinant protein (NP_005266) with a C-terminal MYC/DDK tag, was expressed in HEK293 cells.
<b>Species</b>	Human
<b>Source</b>	HEK293
<b>Description</b>	The GNL1 gene, identified in the human major histocompatibility complex class I region, shows a high degree of similarity with its mouse counterpart. The GNL1 gene is located less than 2 kb centromeric to HLA-E, in the same transcriptional orientation. GNL1 is telomeric to HLA-B and HLA-C.
<b>Molecular Mass</b>	68.7 kDa
<b>AA Sequence</b>	<pre> MPRKKPFSVKQKKKQLQDKRERKRGLQDGLRSSNSRSGSRERREEQTDTS DGE SVTHHIRRLNQQPSQGLGPRGYDPNRYRLHFERDSREEVERRKRAAREQVLQPV S AELLELDIREVYQPGSVLDFPRRPPWSYEMSKEQLMSQEERSFQDYLGKIHGAYSS EKLSYFEHNLETWRQLWRVLEMSDIVLLITDIRHPVNFPPALYEYVTGELGLALVL V LNKVDLAPPALVVAWKHYFHQHPQLHVVLFTSFPRDP RTPQDPSSVLKKSRRRGR GWTRALGPEQLLRACEAITVGKVDLSSWREKIARDVAGATWGNGSGEEEEEEEDGP AVLVEQQTDSAMEPTGPTQERYKDGVV TIGCVGFNPVKGSSLINGLVGRKVVSVSR TPGHTRYFQTYFLTSPVKLDCDCPGLIFPSLLPRQLQVLAGIYPIAQIQEPYTAGVY LAS RIPVQALLHLRHPEAEDPSAEHPWCAWDICEAWAEKRGYKTAKAARNDVYRAANSL </pre>

 Tel: 1-631-559-9269    1-516-512-3133

 Email: [info@creative-biomart.com](mailto:info@creative-biomart.com)     Fax: 1-631-938-8127

 45-1 Ramsey Road, Shirley, NY 11967, USA

LRLAVDGRRLSLCFHPPGYSEQKGTWESHPETTELVVVLQGRVGPAGDEEEEEEEELS  
 SSCEEEGEEDRDADEEGEGDEETPTSAPGSSLAGRNPYALLGEDECTRTRPLEQKL  
 ISEEDLAANDILDYKDDDDKV

**Purity** > 80% as determined by SDS-PAGE and Coomassie blue staining

**Stability** Stable for 3 months from receipt of products under proper storage and handling conditions.

**Storage** Store at -80 centigrade. Avoid repeated freeze-thaw cycles.

**Concentration** 50 µg/mL as determined by BCA

**Storage Buffer** 100 mM glycine, 25 mM Tris-HCl, pH 7.3.

## GENE INFORMATION

**Gene Name** [GNL1 guanine nucleotide binding protein-like 1 \[ Homo sapiens \(human\) \]](#)

**Official Symbol** [GNL1](#)

**Synonyms** GNL1; guanine nucleotide binding protein-like 1; guanine nucleotide-binding protein-like 1; HSR1; GTP-binding protein HSR1; HSR1 GTP-binding protein; FLJ37752; DKFZp547E038; DKFZp547E128;

**Gene ID** [2794](#)

**mRNA Refseq** [NM\\_005275](#)

**Protein Refseq** [NP\\_005266](#)

 Tel: 1-631-559-9269 1-516-512-3133

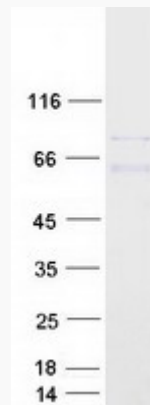
 Email: [info@creative-biomart.com](mailto:info@creative-biomart.com)  Fax: 1-631-938-8127

 45-1 Ramsey Road, Shirley, NY 11967, USA

**MIM** 143024

**UniProt ID** P36915

**SDS-PAGE**



 Tel: 1-631-559-9269 1-516-512-3133

 Email: [info@creative-biomart.com](mailto:info@creative-biomart.com)  Fax: 1-631-938-8127

 45-1 Ramsey Road, Shirley, NY 11967, USA