

Recombinant Human GNL1 Protein, GST-tagged

Cat. No. GNL1-5078H **Lot. No.** (See product label)

SPECIFICATION

Product Overview	Human GNL1 full-length ORF (NP_005266.2, 1 a.a. - 607 a.a.) recombinant protein with GST-tag at N-terminal.
Species	Human
Source	Wheat Germ
Description	The GNL1 gene, identified in the human major histocompatibility complex class I region, shows a high degree of similarity with its mouse counterpart. The GNL1 gene is located less than 2 kb centromeric to HLA-E, in the same transcriptional orientation. GNL1 is telomeric to HLA-B and HLA-C. [provided by RefSeq]
Molecular Mass	95.1 kDa
AA Sequence	<pre> MPRKKPFSVKQKKKQLQDKRERKRGLQDGLRSSNSRSGSRERREEQTDSDGE SVTHHIRRLNQQPSQGLGPRGYDPNRYRLHFERDSREEVERRKRAAREQVLQPVS AELLELDIREVYQPGSVLDFPRRPPWSYEMSKEQLMSQEERSFQDYLGKIHGAYSS EKLSYFEHNLETWRQLWRVLEMSDIVLLITDIRHPVVNFPPALYEYVTGELGLALVLV LNKVDLAPPALVVAWKHYFHQHPQLHVVLFTSFPRDPRTQPDPSSVLKKSRRRGR GWTRALGPEQLLRACEAITVGKVDLSSWREKIARDVAGATWGNGSGEEEEEDGP AVLVEQQTDSAMEPTGPTQERYKDGVVITIGCVGFPNVGKSSLINGLVGRKVVSVSR TPGHTRYFQTYFLTSPVKLCDCPGLIFPSLLPRQLQVLAGIYPIAQIQEPYTAGYLAS RIPVQALLHLRHPEAEDPSAEHPWCAWDICEAWAEKRGYKTAKAARNDVYRAANSL LRLAVDGRSLSLCFHPPGYSEQKGTWESHPETTELVLVQGRVGPAGDEEEEEEEELS </pre>

 Tel: 1-631-559-9269 1-516-512-3133

 Email: info@creative-biomart.com  Fax: 1-631-938-8127

 45-1 Ramsey Road, Shirley, NY 11967, USA

SSCEEEGEEEDRDADEEGEGDEETPTSAPGSSLAGRNPYALLGEDEC

Applications

Enzyme-linked Immunoabsorbent Assay
 Western Blot (Recombinant protein)
 Antibody Production
 Protein Array

Notes

Best use within three months from the date of receipt of this protein.

Storage

Store at -80 centigrade. Aliquot to avoid repeated freezing and thawing.

Storage Buffer

50 mM Tris-HCl, 10 mM reduced Glutathione, pH=8.0 in the elution buffer.

GENE INFORMATION

Gene Name

[GNL1 guanine nucleotide binding protein-like 1 \[Homo sapiens \]](#)

Official Symbol

[GNL1](#)

Synonyms

GNL1; guanine nucleotide binding protein-like 1; guanine nucleotide-binding protein-like 1; HSR1; GTP-binding protein HSR1; HSR1 GTP-binding protein; FLJ37752; DKFZp547E038; DKFZp547E128;

Gene ID

[2794](#)

mRNA Refseq

[NM_005275](#)

Protein Refseq

[NP_005266](#)

MIM

[143024](#)

 Tel: 1-631-559-9269 1-516-512-3133

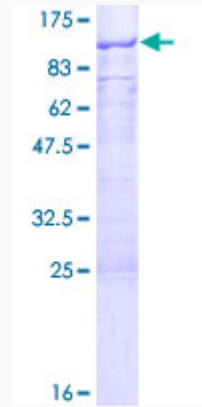
 Email: info@creative-biomart.com  Fax: 1-631-938-8127

 45-1 Ramsey Road, Shirley, NY 11967, USA

UniProt ID

P36915

Quality Control
Testing



12.5% SDS-PAGE Stained with Coomassie Blue.

 Tel: 1-631-559-9269 1-516-512-3133

 Email: info@creative-biomart.com  Fax: 1-631-938-8127

 45-1 Ramsey Road, Shirley, NY 11967, USA