

# Recombinant Full Length Human GNLY Protein, C-Flag-tagged

Cat. No. GNLY-1702HFL Lot. No. (See product label)

## SPECIFICATION

<b>Product Overview</b>	Recombinant Full Length Human GNLY Protein, fused to Flag-tag at C-terminus, was expressed in Mammalian cells.
<b>Species</b>	Human
<b>Source</b>	Mammalian Cells
<b>Description</b>	The product of this gene is a member of the saposin-like protein (SAPLIP) family and is located in the cytotoxic granules of T cells, which are released upon antigen stimulation. This protein is present in cytotoxic granules of cytotoxic T lymphocytes and natural killer cells, and it has antimicrobial activity against <i>M. tuberculosis</i> and other organisms. Alternatively spliced transcript variants encoding different isoforms have been identified.
<b>Form</b>	25 mM Tris HCl, pH 7.3, 100 mM glycine, 10% glycerol.
<b>Molecular Mass</b>	16.2 kDa
<b>AA Sequence</b>	MATWALLLLAAMLLGNPGLVFSRLSPEYYDLARAHLRDEEKSCPCLAQEGPQGDLL TKTQELGRDYRTCL TIVQKLKMMVDKPTQRSVSNAATRVCRTGRSRWRDVCRNFM RRYQSRVTQGLVAGETAQQICEDLRLCIP STGPLTRTRPLEQKLISEEDLAANDILDYKDDDDKV
<b>Purity</b>	> 80% as determined by SDS-PAGE and Coomassie blue staining.

 Tel: 1-631-559-9269 1-516-512-3133

 Email: [info@creative-biomart.com](mailto:info@creative-biomart.com)  Fax: 1-631-938-8127

 45-1 Ramsey Road, Shirley, NY 11967, USA

<b>Stability</b>	Stable for 12 months from the date of receipt of the product under proper storage and handling conditions. Avoid repeated freeze-thaw cycles.
<b>Storage</b>	Store at -80 centigrade.
<b>Concentration</b>	>50 ug/mL as determined by microplate BCA method.
<b>Preparation</b>	Recombinant protein was captured through anti-DDK affinity column followed by conventional chromatography steps.
<b>Protein Families</b>	Secreted Protein
<b>Full Length</b>	Full L.

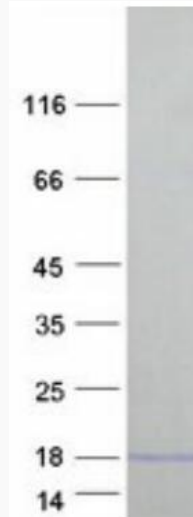
## GENE INFORMATION

<b>Gene Name</b>	<a href="#">GNLY</a> granulysin [ Homo sapiens (human) ]
<b>Official Symbol</b>	<a href="#">GNLY</a>
<b>Synonyms</b>	LAG2; NKG5; LAG-2; D2S69E; TLA519
<b>Gene ID</b>	<a href="#">10578</a>
<b>mRNA Refseq</b>	<a href="#">NM_006433.5</a>
<b>Protein Refseq</b>	<a href="#">NP_006424.2</a>
<b>MIM</b>	<a href="#">188855</a>
<b>UniProt ID</b>	<a href="#">P22749</a>

 Tel: 1-631-559-9269 1-516-512-3133

 Email: [info@creative-biomart.com](mailto:info@creative-biomart.com)  Fax: 1-631-938-8127

 45-1 Ramsey Road, Shirley, NY 11967, USA



Coomassie blue staining of purified GNLY protein.

 Tel: 1-631-559-9269 1-516-512-3133

 Email: [info@creative-biomart.com](mailto:info@creative-biomart.com)  Fax: 1-631-938-8127

 45-1 Ramsey Road, Shirley, NY 11967, USA