

Recombinant Human GNLY Protein, GST-tagged

Cat. No. GNLY-5084H Lot. No. (See product label)

SPECIFICATION

Product Overview	Human GNLY full-length ORF (AAH23576, 16 a.a. - 145 a.a.) recombinant protein with GST-tag at N-terminal.
Species	Human
Source	Wheat Germ
Description	The product of this gene is a member of the saposin-like protein (SAPLIP) family and is located in the cytotoxic granules of T cells, which are released upon antigen stimulation. This protein is present in cytotoxic granules of cytotoxic T lymphocytes and natural killer cells, and it has antimicrobial activity against <i>M. tuberculosis</i> and other organisms. Alternatively spliced transcript variants encoding different isoforms have been identified. [provided by RefSeq]
Molecular Mass	40.04 kDa
AA Sequence	NPGLVFSRLSPEYYDLARAHLRDEEKSCPCLAQEGPQGDLLTKTQELGRDYRTCLTI VQKLKMMVDKPTQRSVSNAATRVCRTGRSRWRDVCRNFMRRYQSRVTQQLVAGE TAQQICEDLRLCIPSTGPL
Applications	Enzyme-linked Immunoabsorbent Assay Western Blot (Recombinant protein) Antibody Production Protein Array

 Tel: 1-631-559-9269 1-516-512-3133

 Email: info@creative-biomart.com  Fax: 1-631-938-8127

 45-1 Ramsey Road, Shirley, NY 11967, USA

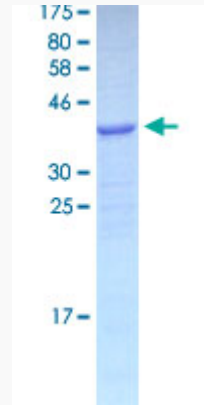
Notes	Best use within three months from the date of receipt of this protein.
Storage	Store at -80 centigrade. Aliquot to avoid repeated freezing and thawing.
Storage Buffer	50 mM Tris-HCl, 10 mM reduced Glutathione, pH=8.0 in the elution buffer.
GENE INFORMATION	
Gene Name	GNLY granulysin [Homo sapiens]
Official Symbol	GNLY
Synonyms	GNLY; granulysin; LAG2; D2S69E; LAG 2; NKG5; T lymphocyte activation gene 519; TLA519; lymphokine LAG-2; lymphocyte-activation gene 2; T-cell activation protein 519; T-lymphocyte activation gene 519; 519; LAG-2;
Gene ID	10578
mRNA Refseq	NM_006433
Protein Refseq	NP_006424
MIM	188855
UniProt ID	P22749

 Tel: 1-631-559-9269 1-516-512-3133

 Email: info@creative-biomart.com  Fax: 1-631-938-8127

 45-1 Ramsey Road, Shirley, NY 11967, USA

**Quality Control
Testing**



12.5% SDS-PAGE Stained with Coomassie Blue.

 Tel: 1-631-559-9269 1-516-512-3133

 Email: info@creative-biomart.com  Fax: 1-631-938-8127

 45-1 Ramsey Road, Shirley, NY 11967, USA