

Recombinant Full Length Human GNPDA2 Protein, C-Flag-tagged

Cat. No. GNPDA2-1057HFL **Lot. No.** (See product label)

SPECIFICATION

Product Overview	Recombinant Full Length Human GNPDA2 Protein, fused to Flag-tag at C-terminus, was expressed in Mammalian cells.
Species	Human
Source	Mammalian Cells
Description	The protein encoded by this gene is an allosteric enzyme that catalyzes the reversible reaction converting D-glucosamine-6-phosphate into D-fructose-6-phosphate and ammonium. Variations of this gene have been reported to be associated with influencing body mass index and susceptibility to obesity. A pseudogene of this gene is located on chromosome 9. Alternative splicing results in multiple transcript variants that encode different protein isoforms.
Form	25 mM Tris HCl, pH 7.3, 100 mM glycine, 10% glycerol.
Molecular Mass	30.9 kDa
AA Sequence	MRLVILDNYDLASEWAAKYICNRIIQFKPGQDRYFTLGLPTGSTPLGCYKKLIEYHKN GHLSFKYVKTFN MDEYVGLPRNHPE SYHSYMWNNFFKHIDIDPNNAHILDGNAADL QAECDAFENKIKEAGGIDLFVGGIGP DGHIAFNEPGSSLVSRTRLKTLAMDTILANAK YFDGDL SKVSTMALTVGVGTVM DAREVMILITGAHKAF ALYKAIEGVNHMWTVSAF QQHPRTIFVCEDEATLELRVKTVKYFKGLMHVHNKLV DPLFSMKDGNTRTRPLEQK LISEEDLAANDILDYKDDDDKV

 Tel: 1-631-559-9269 1-516-512-3133

 Email: info@creative-biomart.com  Fax: 1-631-938-8127

 45-1 Ramsey Road, Shirley, NY 11967, USA

Purity	> 80% as determined by SDS-PAGE and Coomassie blue staining.
Stability	Stable for 12 months from the date of receipt of the product under proper storage and handling conditions. Avoid repeated freeze-thaw cycles.
Storage	Store at -80 centigrade.
Concentration	>50 ug/mL as determined by microplate BCA method.
Preparation	Recombinant protein was captured through anti-DDK affinity column followed by conventional chromatography steps.
Protein Pathways	Amino sugar and nucleotide sugar metabolism, Metabolic pathways
Full Length	Full L.

GENE INFORMATION

Gene Name	GNPDA2 glucosamine-6-phosphate deaminase 2 [Homo sapiens (human)]
Official Symbol	GNPDA2
Synonyms	GNP2; SB52
Gene ID	132789
mRNA Refseq	NM_138335.3
Protein Refseq	NP_612208.1
MIM	613222

 Tel: 1-631-559-9269 1-516-512-3133

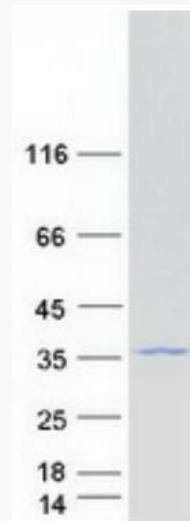
 Email: info@creative-biomart.com  Fax: 1-631-938-8127

 45-1 Ramsey Road, Shirley, NY 11967, USA



UniProt ID

Q8TDQ7



Coomassie blue staining of purified GNPDA2 protein.

Tel: 1-631-559-9269 1-516-512-3133

Email: info@creative-biomart.com Fax: 1-631-938-8127

45-1 Ramsey Road, Shirley, NY 11967, USA