

Recombinant Human GNPDA2 Protein, Myc/DDK-tagged, C13 and N15-labeled

Cat. No. GNPDA2-4679H **Lot. No.** (See product label)

SPECIFICATION

Product Overview	GNPDA2 MS Standard C13 and N15-labeled recombinant protein (NP_612208) with a C-terminal MYC/DDK tag, was expressed in HEK293 cells.
Species	Human
Source	HEK293
Description	The protein encoded by this gene is an allosteric enzyme that catalyzes the reversible reaction converting D-glucosamine-6-phosphate into D-fructose-6-phosphate and ammonium. Variations of this gene have been reported to be associated with influencing body mass index and susceptibility to obesity. A pseudogene of this gene is located on chromosome 9. Alternative splicing results in multiple transcript variants that encode different protein isoforms.
Molecular Mass	30.9 kDa
AA Sequence	MRLVILDNYDLASEWAAKYICNRIIQFKPGQDRYFTLGLPTGSTPLGICYKKLIEYHKN GHLSFKYVKTFNMD EYVGLPRNHPE SYHSYMWNNFFKHIDIPNNAHILDGNAADL QAECDAFENKIKEAGGIDLFVGGIGPDGHIAFNEPGSSLVSRTRLKTLAMDTILANAK YFDGDL SKVSTMALTVGVGTVM DAREVMILITGAHKAFALYKAIEGVNHMWTVSAFQ QHPRTIFVCDE DATLELRVKTVKYFKGLMHVHNKLV DPLFSMKDGNTRTRPLEQKLI SEEDLAANDILDYKDDDDKV
Purity	> 80% as determined by SDS-PAGE and Coomassie blue staining

 Tel: 1-631-559-9269 1-516-512-3133

 Email: info@creative-biomart.com  Fax: 1-631-938-8127

 45-1 Ramsey Road, Shirley, NY 11967, USA

Stability	Stable for 3 months from receipt of products under proper storage and handling conditions.
Storage	Store at -80 centigrade. Avoid repeated freeze-thaw cycles.
Concentration	50 µg/mL as determined by BCA
Storage Buffer	100 mM glycine, 25 mM Tris-HCl, pH 7.3.

GENE INFORMATION

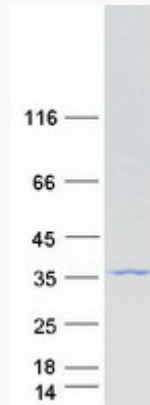
Gene Name	GNPDA2 glucosamine-6-phosphate deaminase 2 [Homo sapiens (human)]
Official Symbol	GNPDA2
Synonyms	GNPDA2; glucosamine-6-phosphate deaminase 2; glucosamine-6-phosphate isomerase 2; glucosamine 6 phosphate isomerase; SB52; GNPDA 2; 4921523118Rik; glcN6P deaminase 2; glucosamine-6-phosphate isomerase SB52; putative glucosamine-6-phosphate isomerase; GNP2;
Gene ID	132789
mRNA Refseq	NM_138335
Protein Refseq	NP_612208
MIM	613222
UniProt ID	Q8TDQ7

 Tel: 1-631-559-9269 1-516-512-3133

 Email: info@creative-biomart.com  Fax: 1-631-938-8127

 45-1 Ramsey Road, Shirley, NY 11967, USA

SDS-PAGE



 Tel: 1-631-559-9269 1-516-512-3133

 Email: info@creative-biomart.com  Fax: 1-631-938-8127

 45-1 Ramsey Road, Shirley, NY 11967, USA