

Recombinant Human GNPDA2 Protein, GST-tagged

Cat. No. GNPDA2-5092H **Lot. No.** (See product label)

SPECIFICATION

Product Overview	Human GNPDA2 full-length ORF (NP_612208.1, 1 a.a. - 276 a.a.) recombinant protein with GST-tag at N-terminal.
Species	Human
Source	Wheat Germ
Description	The protein encoded by this gene is an allosteric enzyme that catalyzes the reversible reaction converting D-glucosamine-6-phosphate into D-fructose-6-phosphate and ammonium. Variations of this gene have been reported to be associated with influencing body mass index and susceptibility to obesity. A pseudogene of this gene is located on chromosome 9. Alternative splicing results in multiple transcript variants that encode different protein isoforms. [provided by RefSeq, Aug 2012]
Molecular Mass	57.5 kDa
AA Sequence	MRLVILDNYDLASEWAAKYICNRIIQFKPGQDRYFTLGLPTGSTPLGICYKKLIEYHKN GHLSFKYVKTFNMDEYVGLPRNHPEYHSYMWNNFFKHIDIDPNNAHILDGNAADL QAECDAFENKIKEAGGIDLVGGIGPDGHIAFNEPGSSLVSRTRLKTLAMDILANAK YFDGDLISKVPTMALTVGVGTVMDAREVMILITGAHKAFALYKAIEEGVNHMWTVSAF QQHPRTIFVCEDEATLELRVKTVKYFKGLMHVHNKLVDPPLFSMKDGN
Applications	Enzyme-linked Immunoabsorbent Assay Western Blot (Recombinant protein) Antibody Production

 Tel: 1-631-559-9269 1-516-512-3133

 Email: info@creative-biomart.com  Fax: 1-631-938-8127

 45-1 Ramsey Road, Shirley, NY 11967, USA

Protein Array

Notes	Best use within three months from the date of receipt of this protein.
Storage	Store at -80 centigrade. Aliquot to avoid repeated freezing and thawing.
Storage Buffer	50 mM Tris-HCl, 10 mM reduced Glutathione, pH=8.0 in the elution buffer.

GENE INFORMATION

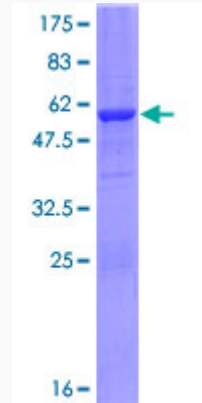
Gene Name	GNPDA2 glucosamine-6-phosphate deaminase 2 [Homo sapiens]
Official Symbol	GNPDA2
Synonyms	GNPDA2; glucosamine-6-phosphate deaminase 2; glucosamine-6-phosphate isomerase 2; glucosamine 6 phosphate isomerase; SB52; GNPDA 2; 4921523118Rik; glcN6P deaminase 2; glucosamine-6-phosphate isomerase SB52; putative glucosamine-6-phosphate isomerase; GNP2;
Gene ID	132789
mRNA Refseq	NM_138335
Protein Refseq	NP_612208
MIM	613222
UniProt ID	Q8TDQ7

 Tel: 1-631-559-9269 1-516-512-3133

 Email: info@creative-biomart.com  Fax: 1-631-938-8127

 45-1 Ramsey Road, Shirley, NY 11967, USA

**Quality Control
Testing**



12.5% SDS-PAGE Stained with Coomassie Blue.

 Tel: 1-631-559-9269 1-516-512-3133

 Email: info@creative-biomart.com  Fax: 1-631-938-8127

 45-1 Ramsey Road, Shirley, NY 11967, USA