

# Recombinant Full Length Human GNRH1 Protein, C-Flag-tagged

**Cat. No.** GNRH1-1845HFL    **Lot. No.** (See product label)

## SPECIFICATION

<b>Product Overview</b>	Recombinant Full Length Human GNRH1 Protein, fused to Flag-tag at C-terminus, was expressed in Mammalian cells.
<b>Species</b>	Human
<b>Source</b>	Mammalian Cells
<b>Description</b>	This gene encodes a preproprotein that is proteolytically processed to generate a peptide that is a member of the gonadotropin-releasing hormone (GnRH) family of peptides. Alternative splicing results in multiple transcript variants, at least one of which is secreted and then cleaved to generate gonadoliberin-1 and GnRH-associated peptide 1. Gonadoliberin-1 stimulates the release of luteinizing and follicle stimulating hormones, which are important for reproduction. Mutations in this gene are associated with hypogonadotropic hypogonadism.
<b>Form</b>	25 mM Tris HCl, pH 7.3, 100 mM glycine, 10% glycerol.
<b>Molecular Mass</b>	7.8 kDa
<b>AA Sequence</b>	MKPIQKLLAGLILLTWCVEGCSSQHWSYGLRPGGKRDAENLIDSFQEIVKEVGQLAE TQRFECTTHQPRS PLRDLKGALESLEEETGQKKI TRTRPLEQKLISEEDLAANDILD YKDDDDKV
<b>Purity</b>	> 80% as determined by SDS-PAGE and Coomassie blue staining.

 Tel: 1-631-559-9269    1-516-512-3133

 Email: [info@creative-biomart.com](mailto:info@creative-biomart.com)     Fax: 1-631-938-8127

 45-1 Ramsey Road, Shirley, NY 11967, USA

<b>Stability</b>	Stable for 12 months from the date of receipt of the product under proper storage and handling conditions. Avoid repeated freeze-thaw cycles.
<b>Storage</b>	Store at -80 centigrade.
<b>Concentration</b>	>50 ug/mL as determined by microplate BCA method.
<b>Preparation</b>	Recombinant protein was captured through anti-DDK affinity column followed by conventional chromatography steps.
<b>Protein Families</b>	Druggable Genome, Secreted Protein
<b>Protein Pathways</b>	GnRH signaling pathway
<b>Full Length</b>	Full L.

## GENE INFORMATION

<b>Gene Name</b>	<a href="#">GNRH1 gonadotropin releasing hormone 1 [ Homo sapiens (human) ]</a>
<b>Official Symbol</b>	<a href="#">GNRH1</a>
<b>Synonyms</b>	GRH; GNRH; LHRH; LNRH
<b>Gene ID</b>	<a href="#">2796</a>
<b>mRNA Refseq</b>	<a href="#">NM_000825.3</a>
<b>Protein Refseq</b>	<a href="#">NP_000816.4</a>
<b>MIM</b>	<a href="#">152760</a>

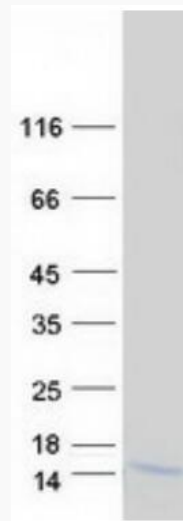
 Tel: 1-631-559-9269 1-516-512-3133

 Email: [info@creative-biomart.com](mailto:info@creative-biomart.com)  Fax: 1-631-938-8127

 45-1 Ramsey Road, Shirley, NY 11967, USA

UniProt ID

P01148



Coomassie blue staining of purified GNRH1 protein.

 Tel: 1-631-559-9269 1-516-512-3133

 Email: [info@creative-biomart.com](mailto:info@creative-biomart.com)  Fax: 1-631-938-8127

 45-1 Ramsey Road, Shirley, NY 11967, USA