

Recombinant Human GNRH1 Protein, GST-tagged

Cat. No. GNRH1-5096H Lot. No. (See product label)

SPECIFICATION

Product Overview	Human GNRH1 full-length ORF (NP_000816.1, 1 a.a. - 92 a.a.) recombinant protein with GST-tag at N-terminal.
Species	Human
Source	Wheat Germ
Description	This gene encodes a preproprotein that is proteolytically processed to generate a peptide that is a member of the gonadotropin-releasing hormone (GnRH) family of peptides. Alternative splicing results in multiple transcript variants, at least one of which is secreted and then cleaved to generate gonadoliberin-1 and GnRH-associated peptide 1. Gonadoliberin-1 stimulates the release of luteinizing and follicle stimulating hormones, which are important for reproduction. Mutations in this gene are associated with hypogonadotropic hypogonadism. [provided by RefSeq, Nov 2015]
Molecular Mass	35.75 kDa
AA Sequence	MKPIQKLLAGLILLTWCVEGCSSQHWSYGLRPGGKRDAENLIDSFQEIVKEVGQLAE TQRFECTTHQPRSPLRDLKGALESLEEETGQKKI
Applications	Enzyme-linked Immunoabsorbent Assay Western Blot (Recombinant protein) Antibody Production Protein Array

 Tel: 1-631-559-9269 1-516-512-3133

 Email: info@creative-biomart.com  Fax: 1-631-938-8127

 45-1 Ramsey Road, Shirley, NY 11967, USA

Notes	Best use within three months from the date of receipt of this protein.
Storage	Store at -80 centigrade. Aliquot to avoid repeated freezing and thawing.
Storage Buffer	50 mM Tris-HCl, 10 mM reduced Glutathione, pH=8.0 in the elution buffer.

GENE INFORMATION

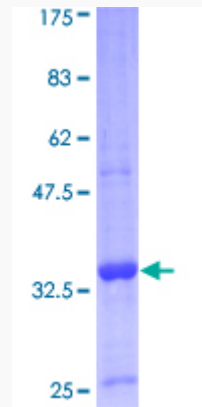
Gene Name	GNRH1 gonadotropin-releasing hormone 1 (luteinizing-releasing hormone) [Homo sapiens]
Official Symbol	GNRH1
Synonyms	GNRH1; gonadotropin-releasing hormone 1 (luteinizing-releasing hormone); GNRH, gonadotropin releasing hormone 1 (leutinizing releasing hormone), GRH, LHRH; progonadoliberin-1; luliberin I; progonadoliberin I; GnRH-associated peptide 1; prolactin release-inhibiting factor; gonadotropin-releasing hormone 1 (leutinizing-releasing hormone); GRH; GNRH; LHRH; LNRH;
Gene ID	2796
mRNA Refseq	NM_000825
Protein Refseq	NP_000816
MIM	152760
UniProt ID	P01148

 Tel: 1-631-559-9269 1-516-512-3133

 Email: info@creative-biomart.com  Fax: 1-631-938-8127

 45-1 Ramsey Road, Shirley, NY 11967, USA

**Quality Control
Testing**



12.5% SDS-PAGE Stained with Coomassie Blue.

 Tel: 1-631-559-9269 1-516-512-3133

 Email: info@creative-biomart.com  Fax: 1-631-938-8127

 45-1 Ramsey Road, Shirley, NY 11967, USA