

Recombinant Human GNRH2 Protein (Gln24-Val120), C-His tagged

Cat. No. GNRH2-2979H **Lot. No.** (See product label)

SPECIFICATION

Product Overview	Recombinant human GNRH2 (Gln24-Val120) protein fused with the C-terminal His tag was expressed in Mammalian cells.
Species	Human
Source	Mammalian Cells
ProteinLength	Gln24-Val120
Molecular Mass	10.67 kDa
Purity	>90 % as determined by SDS-PAGE.
Notes	For research use only.
Storage	Use a manual defrost freezer and avoid repeated freeze thaw cycles. Store at 2 to 8 centigrade for one week. Store at -20 to -80 centigrade for twelve months from the date of receipt.
Storage Buffer	Supplied as solution form in PBS or lyophilized from PBS.
Reconstitution	Reconstitute in sterile water for a stock solution.
Shipping	In general, proteins are provided as lyophilized powder/frozen liquid. They are

 Tel: 1-631-559-9269 1-516-512-3133

 Email: info@creative-biomart.com  Fax: 1-631-938-8127

 45-1 Ramsey Road, Shirley, NY 11967, USA

shipped out with dry ice/blue ice unless customers require otherwise.

GENE INFORMATION

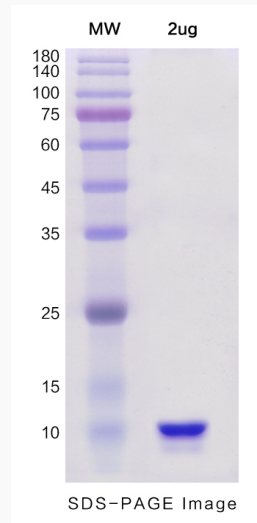
Gene Name	GNRH2 gonadotropin-releasing hormone 2 [Homo sapiens (human)]
Official Symbol	GNRH2
Synonyms	GNRH2; gonadotropin-releasing hormone 2; progonadoliberin-2; luliberin II; progonadoliberin II; luteinizing hormone-releasing hormone II; GnRH-II; LH-RHII;
Gene ID	2797
mRNA Refseq	NM_001501
Protein Refseq	NP_001492
MIM	602352
UniProt ID	O43555

 Tel: 1-631-559-9269 1-516-512-3133

 Email: info@creative-biomart.com  Fax: 1-631-938-8127

 45-1 Ramsey Road, Shirley, NY 11967, USA

SDS-PAGE



 Tel: 1-631-559-9269 1-516-512-3133

 Email: info@creative-biomart.com  Fax: 1-631-938-8127

 45-1 Ramsey Road, Shirley, NY 11967, USA