

## Recombinant Human GNRH2 Protein, GST-tagged

Cat. No. GNRH2-5098H Lot. No. (See product label)

### SPECIFICATION

<b>Product Overview</b>	Human GNRH2 full-length ORF ( NP_001492.1, 1 a.a. - 120 a.a.) recombinant protein with GST-tag at N-terminal.
<b>Species</b>	Human
<b>Source</b>	Wheat Germ
<b>Description</b>	The protein encoded by this gene is a preproprotein that is cleaved to form a secreted 10 aa peptide hormone. The secreted decapeptide regulates reproduction in females by stimulating the secretion of both luteinizing- and follicle-stimulating hormones. Three transcript variants that encode unique proproteins but the same peptide hormone have been found for this gene. [provided by RefSeq]
<b>Molecular Mass</b>	39.3 kDa
<b>AA Sequence</b>	MASSRRGLLLLLLLTAHLGPSEAQHWSHGWYPGGKRALSSAQDPQNALRPPGRAL DTAAGSPVQTAHGLPSDALAPLDDSMPEWEGRTTAQWSLHRKRHLARTLLTAAREP RPAPPSSNKV
<b>Applications</b>	Enzyme-linked Immunoabsorbent Assay Western Blot (Recombinant protein) Antibody Production Protein Array
<b>Notes</b>	Best use within three months from the date of receipt of this protein.

 Tel: 1-631-559-9269 1-516-512-3133

 Email: [info@creative-biomart.com](mailto:info@creative-biomart.com)  Fax: 1-631-938-8127

 45-1 Ramsey Road, Shirley, NY 11967, USA

**Storage** Store at -80 centigrade. Aliquot to avoid repeated freezing and thawing.

**Storage Buffer** 50 mM Tris-HCl, 10 mM reduced Glutathione, pH=8.0 in the elution buffer.

## GENE INFORMATION

**Gene Name** [GNRH2 gonadotropin-releasing hormone 2 \[ Homo sapiens \]](#)

**Official Symbol** [GNRH2](#)

**Synonyms** GNRH2; gonadotropin-releasing hormone 2; progonadoliberin-2; luliberin II; progonadoliberin II; luteinizing hormone-releasing hormone II; GnRH-II; LH-RHII;

**Gene ID** [2797](#)

**mRNA Refseq** [NM\\_001501](#)

**Protein Refseq** [NP\\_001492](#)

**MIM** [602352](#)

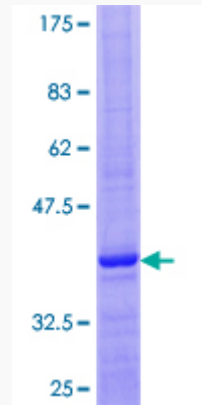
**UniProt ID** [O43555](#)

 Tel: 1-631-559-9269 1-516-512-3133

 Email: [info@creative-biomart.com](mailto:info@creative-biomart.com)  Fax: 1-631-938-8127

 45-1 Ramsey Road, Shirley, NY 11967, USA

**Quality Control  
Testing**



12.5% SDS-PAGE Stained with Coomassie Blue.

 Tel: 1-631-559-9269 1-516-512-3133

 Email: [info@creative-biomart.com](mailto:info@creative-biomart.com)  Fax: 1-631-938-8127

 45-1 Ramsey Road, Shirley, NY 11967, USA