

# Recombinant Human GNRH2 Protein (24-120 aa), His-SUMO-tagged

**Cat. No.** GNRH2-529H    **Lot. No.** (See product label)

## SPECIFICATION

<b>Product Overview</b>	Recombinant Human GNRH2 Protein (24-120 aa) is produced by E. coli expression system. This protein is fused with a 6xHis-SUMO tag at the N-terminal. Research Area: Signal Transduction. Protein Description: Full Length of Mature Protein.
<b>Species</b>	Human
<b>Source</b>	E.coli
<b>ProteinLength</b>	24-120 aa
<b>Description</b>	Stimulates the secretion of gonadotropins; it stimulates the secretion of both luteinizing and follicle-stimulating hormones.
<b>Form</b>	Tris-based buffer, 50% glycerol
<b>Molecular Mass</b>	26.5 kDa
<b>AA Sequence</b>	QHWSHGWYPGGKRALSSAQDPQNALRPPGRALDTAAGSPVQTAHGLPSDALAPL DDSMPWEGRTTAQWSLHRKRHLARTLLTAAREPRPAPPSSNKV
<b>Purity</b>	> 90% as determined by SDS-PAGE.
<b>Notes</b>	Repeated freezing and thawing is not recommended. Store working aliquots at 4 centigrade for up to one week.

 Tel: 1-631-559-9269    1-516-512-3133

 Email: [info@creative-biomart.com](mailto:info@creative-biomart.com)     Fax: 1-631-938-8127

 45-1 Ramsey Road, Shirley, NY 11967, USA

**Storage** The shelf life is related to many factors, storage state, buffer ingredients, storage temperature and the stability of the protein itself. Generally, the shelf life of liquid form is 6 months at -20 centigrade/-80 centigrade. The shelf life of lyophilized form is 12 months at -20 centigrade/-80 centigrade.

**Concentration** A hardcopy of COA with concentration instruction is sent along with the products.

## GENE INFORMATION

**Gene Name** GNRH2 gonadotropin-releasing hormone 2 [ Homo sapiens ]

**Official Symbol** GNRH2

**Synonyms** GNRH2; luliberin II; GnRH-II; LH-RHII;

**Gene ID** 2797

**mRNA Refseq** NM\_001501

**Protein Refseq** NP\_001492

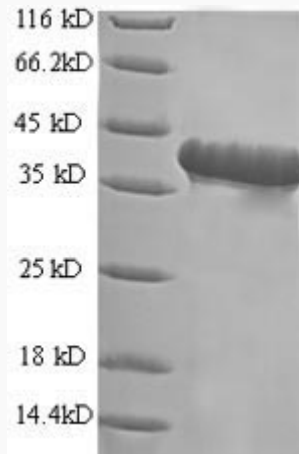
**MIM** 602352

**UniProt ID** O43555

 Tel: 1-631-559-9269 1-516-512-3133

 Email: [info@creative-biomart.com](mailto:info@creative-biomart.com)  Fax: 1-631-938-8127

 45-1 Ramsey Road, Shirley, NY 11967, USA



(Tris-Glycine gel) Discontinuous SDS-PAGE (reduced) with 5% enrichment gel and 15% separation gel.

 Tel: 1-631-559-9269 1-516-512-3133

 Email: [info@creative-biomart.com](mailto:info@creative-biomart.com)  Fax: 1-631-938-8127

 45-1 Ramsey Road, Shirley, NY 11967, USA