

Recombinant Rhesus macaque GNRHR2 Full Length Transmembrane protein, His-tagged

Cat. No. GNRHR2-2456R Lot. No. (See product label)

SPECIFICATION

Product Overview

Recombinant Rhesus macaque GNRHR2 protein(Q95JG1)(1-379aa), fused to N-terminal His tag, was expressed in E. coli.

Species

Rhesus macaque

Source

E.coli

ProteinLength

1-379aa

Form

If the delivery form is liquid, the default storage buffer is Tris/PBS-based buffer, 5%-50% glycerol.
If the delivery form is lyophilized powder, the buffer before lyophilization is Tris/PBS-based buffer, 6% Trehalose, pH 8.0.

Molecular Mass

44.3 kDa

AA Sequence

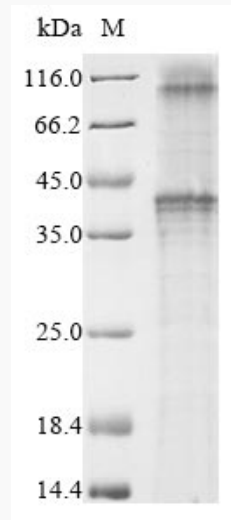
MSAGNGTPWGSAAGEESWAASGVAVEGSELPTFSAAAKVRVGVTVIVLFVSSAGGN
LAVLWSVTRPQPSQLRPSVRTLFAHLAAADLLVTFVVMPLDATWNITVQWLAEDIA
CRTLMFLKLMAMYSAAFLPVVIGLDRQAAVLNPLGSRSGVRKLLGAAWGLSFLALP
QLFLFHTVHRAGVPVFTQCVTKGSFKARWQETTYNLFTFRCLFLLPLTAMAICYSHIV
LSVSSPQTRKGSHPAGEFALCRSFDNCPVRLWALRLALLILTFILCWTPYYLLGL
WYWFSPMTLTEVPPSLSHILFLFGLLNAPLDPLLYGAFTLGCQRGHQELSIDSSNEG
SGRMLQQEIHALRQQEVQKTVTSRRAGETKGISITSI

 Tel: 1-631-559-9269 1-516-512-3133

 Email: info@creative-biomart.com  Fax: 1-631-938-8127

 45-1 Ramsey Road, Shirley, NY 11967, USA

| | |
|-----------------------|---|
| Purity | Greater than 85% as determined by SDS-PAGE. |
| Storage | Store at -20°C/-80°C upon receipt, aliquoting is necessary for mutiple use. Avoid repeated freeze-thaw cycles. |
| Reconstitution | Please reconstitute protein in deionized sterile water to a concentration of 0.1-1.0 mg/mL. We recommend to add 5-50% of glycerol (final concentration) and aliquot for long-term storage at -20°C/-80°C. Our default final concentration of glycerol is 50%. |

SDS-PAGE

 Tel: 1-631-559-9269 1-516-512-3133

 Email: info@creative-biomart.com  Fax: 1-631-938-8127

 45-1 Ramsey Road, Shirley, NY 11967, USA