

Recombinant Human GNRHR2 Protein, GST-tagged

Cat. No. GNRHR2-5100H **Lot. No.** (See product label)

SPECIFICATION

Product Overview	Human GNRHR2 partial ORF (NP_001457, 237 a.a. - 292 a.a.) recombinant protein with GST-tag at N-terminal.
Species	Human
Source	Wheat Germ
Description	<p>The receptor for gonadotropin releasing hormone 2 (GnRH2) is encoded by the GnRH2 receptor (GnRHR2) gene. In non-hominoid primates and non-mammalian vertebrates, GnRHR2 encodes a seven-transmembrane G-protein coupled receptor. However, in human, the N-terminus of the predicted protein contains a frameshift and premature stop codon. In human, GnRHR2 transcription occurs but whether the gene produces a functional C-terminal multi-transmembrane protein is currently unresolved. Alternative splice variants have been reported. An untranscribed pseudogene of GnRHR2 is also on chromosome 14. [provided by RefSeq</p>
Molecular Mass	31.9 kDa
AA Sequence	TLGCRRGHQELSIDSSKEGSGRMLQEEIHAFRQLEVQKTVTSRRAGETKGISITSI
Applications	<p>Enzyme-linked Immunoabsorbent Assay Western Blot (Recombinant protein) Antibody Production Protein Array</p>

 Tel: 1-631-559-9269 1-516-512-3133

 Email: info@creative-biomart.com  Fax: 1-631-938-8127

 45-1 Ramsey Road, Shirley, NY 11967, USA

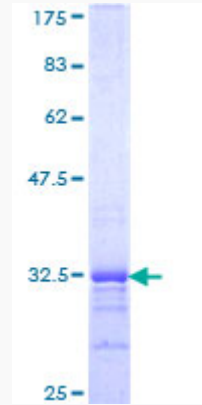
Notes	Best use within three months from the date of receipt of this protein.
Storage	Store at -80 centigrade. Aliquot to avoid repeated freezing and thawing.
Storage Buffer	50 mM Tris-HCl, 10 mM reduced Glutathione, pH=8.0 in the elution buffer.
GENE INFORMATION	
Gene Name	GNRHR2 gonadotropin releasing hormone receptor 2 (pseudogene) [Homo sapiens (human)]
Official Symbol	GNRHR2
Synonyms	GNRHR2; gonadotropin releasing hormone receptor 2 (pseudogene); GnRH-II-R; GnRH receptor II 5TM; Type II GnRH receptor; gonadotropin-releasing hormone (type 2) receptor 2, pseudogene
Gene ID	114814
MIM	612875
UniProt ID	Q96P88

 Tel: 1-631-559-9269 1-516-512-3133

 Email: info@creative-biomart.com  Fax: 1-631-938-8127

 45-1 Ramsey Road, Shirley, NY 11967, USA

**Quality Control
Testing**



12.5% SDS-PAGE Stained with Coomassie Blue.

 Tel: 1-631-559-9269 1-516-512-3133

 Email: info@creative-biomart.com  Fax: 1-631-938-8127

 45-1 Ramsey Road, Shirley, NY 11967, USA