

Recombinant Human GOLGA1 Protein, GST-tagged

Cat. No. GOLGA1-5103H Lot. No. (See product label)

SPECIFICATION

Product Overview Human GOLGA1 full-length ORF (AAH32853.1, 1 a.a. - 767 a.a.) recombinant protein with GST-tag at N-terminal.

Species Human

Source Wheat Germ

Description The Golgi apparatus, which participates in glycosylation and transport of proteins and lipids in the secretory pathway, consists of a series of stacked cisternae (flattened membrane sacs). Interactions between the Golgi and microtubules are thought to be important for the reorganization of the Golgi after it fragments during mitosis. The golgins are a family of proteins, of which the protein encoded by this gene is a member, that are localized to the Golgi. This encoded protein is associated with Sjogrens syndrome. [provided by RefSeq]

Molecular Mass 114.6 kDa

AA Sequence

```

MFAKLLKKKIAEETAVAQRPGGATRIPRSVSKESVASMADSGDDFASDGSSSREDL
SSQLLRNEQIRKLEARLSDYAEQVRNLQKIKEKLEIALEKHQDSSMRKFQEQNETF
QANRAKMAEGLALALARKDQEWSEKMDQLEKEKNILTAQLQEMKNQSMNLFQRRD
EMDELEGFQQQELSKIKHMLLKKEESLGKMEQELEARTRELSRTQEELMNSNQMSS
DLSQKLEELQRHYSTLEEQRDHVIASKTGAESKITALAQKEQELQALIQQLSIDLQKV
TAETQEKEDVITHLQEKVASLEKRLEQNLSGEEHVQELLKEKTLAEQNLEDTRQQLL
AARSSQAKAINTLETRVRELEQTLQASEEQLQQSKGIVAAQETQIQELAAANQESSH
    
```

 Tel: 1-631-559-9269 1-516-512-3133

 Email: info@creative-biomart.com  Fax: 1-631-938-8127

 45-1 Ramsey Road, Shirley, NY 11967, USA

VQQQALALEQQFLERTQALEAQIVALERMRAADQTTAEQGMRQLEQENAALKECR
 NEYERSLQNHQFELKKLKEEWSQREIVSVAMAQALEEVRKQREEFQQQAANLTAIID
 EKEQNLREKTEVLLQKEQEILQLERGHNSALLQIHQLQAELEALRTLKAEAAVVAEQ
 EDLLRLRGPLQAEALSVNESHVTSRAMQDPVFQLPTAGRTPNGEVGAMDLTQLQK
 EKQDLEQQLLEKNKTIKMQQRMLELRKTLQKELKIRPDNELFEVREKPGPEMANM
 APSVTNNTDLTDAREINFEYLNKVVLFMSCRESEAFHLIKAVSVLLNFSQEEENMLK
 ETLEYKMSWFGSKPAPKGSIRPSISNPRIPWS

Applications	Enzyme-linked Immunoabsorbent Assay Western Blot (Recombinant protein) Antibody Production Protein Array
Notes	Best use within three months from the date of receipt of this protein.
Storage	Store at -80 centigrade. Aliquot to avoid repeated freezing and thawing.
Storage Buffer	50 mM Tris-HCl, 10 mM reduced Glutathione, pH=8.0 in the elution buffer.

GENE INFORMATION

Gene Name	GOLGA1 golgin A1 [Homo sapiens]
Official Symbol	GOLGA1
Synonyms	GOLGA1; golgin A1; golgi autoantigen, golgin subfamily a, 1; Golgin subfamily A member 1; golgin 97; MGC33154; gap junction protein, alpha 4, 37kD; golgin-97;
Gene ID	2800
mRNA Refseq	NM_002077

 Tel: 1-631-559-9269 1-516-512-3133

 Email: info@creative-biomart.com  Fax: 1-631-938-8127

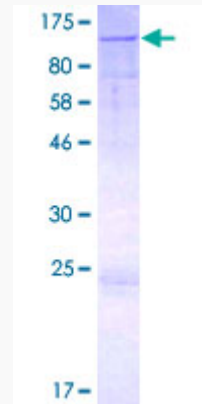
 45-1 Ramsey Road, Shirley, NY 11967, USA

Protein Refseq NP_002068

MIM 602502

UniProt ID Q92805

**Quality Control
Testing**



12.5% SDS-PAGE Stained with Coomassie Blue.

 Tel: 1-631-559-9269 1-516-512-3133

 Email: info@creative-biomart.com  Fax: 1-631-938-8127

 45-1 Ramsey Road, Shirley, NY 11967, USA