

Recombinant Human GOLGA2 Protein, GST-tagged

Cat. No. GOLGA2-5105H **Lot. No.** (See product label)

SPECIFICATION

Product Overview	Human GOLGA2 full-length ORF (AAH06381.1, 1 a.a. - 345 a.a.) recombinant protein with GST-tag at N-terminal.
Species	Human
Source	Wheat Germ
Description	The Golgi apparatus, which participates in glycosylation and transport of proteins and lipids in the secretory pathway, consists of a series of stacked cisternae (flattened membrane sacs). Interactions between the Golgi and microtubules are thought to be important for the reorganization of the Golgi after it fragments during mitosis. The golgins are a family of proteins, of which the protein encoded by this gene is a member, that are localized to the Golgi. This encoded protein has been postulated to play roles in the stacking of Golgi cisternae and in vesicular transport. Several alternatively spliced transcript variants of this gene have been described, but the full-length nature of these variants has not been determined. [provided by RefSeq
Molecular Mass	63.58 kDa
AA Sequence	<p>MQNDRTTISRALSQNRELKEQLAELQSGFVKLTNENMEITSALQSEQHVKRELGKKL GELQEKLSELKETVELKSQEAQSLQQQRDQYLGHLLQYYVAAYQQLTSEKEVLHNQL LLQTQLVDQLQQQEAQGKAVAEMARQELQETQERLEAATQQNQLRAQLSLMAHP GEGDGLDREEEEEDEEEEEAVAVPQPMPSPEDLESREAMVAFFNSAVASAEEEQA RLRGQLKEQSVRCRRLAHLASAQKEPEAAAPAPGTGGDSVCGETHRALQGAMEK</p>

 Tel: 1-631-559-9269 1-516-512-3133

 Email: info@creative-biomart.com  Fax: 1-631-938-8127

 45-1 Ramsey Road, Shirley, NY 11967, USA

LQSRFMELMQEKADLKERPGRVLPVTTPLHSRSCSCFVRCRTPGSAQAWAATPAF
LFFTGLTRMMR

Applications	Enzyme-linked Immunoabsorbent Assay Western Blot (Recombinant protein) Antibody Production Protein Array
Notes	Best use within three months from the date of receipt of this protein.
Storage	Store at -80 centigrade. Aliquot to avoid repeated freezing and thawing.
Storage Buffer	50 mM Tris-HCl, 10 mM reduced Glutathione, pH=8.0 in the elution buffer.

GENE INFORMATION

Gene Name	GOLGA2 golgin A2 [Homo sapiens]
Official Symbol	GOLGA2
Synonyms	GOLGA2; golgin A2; golgi autoantigen, golgin subfamily a, 2; Golgin subfamily A member 2; GM130; Golgi matrix protein GM130; golgin 95; SY11 protein; golgin-95; GM130 autoantigen; 130 kDa cis-Golgi matrix protein; MGC20672;
Gene ID	2801
mRNA Refseq	NM_004486
Protein Refseq	NP_004477
MIM	602580

 Tel: 1-631-559-9269 1-516-512-3133

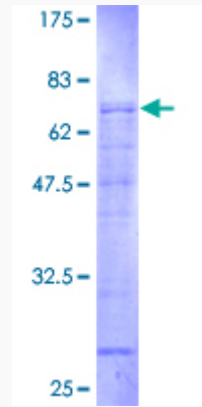
 Email: info@creative-biomart.com  Fax: 1-631-938-8127

 45-1 Ramsey Road, Shirley, NY 11967, USA

UniProt ID

Q08379

Quality Control
Testing



12.5% SDS-PAGE Stained with Coomassie Blue.

 Tel: 1-631-559-9269 1-516-512-3133

 Email: info@creative-biomart.com  Fax: 1-631-938-8127

 45-1 Ramsey Road, Shirley, NY 11967, USA