

# Recombinant Human GOLGA3 Protein, Myc/DDK-tagged, C13 and N15-labeled

**Cat. No.** GOLGA3-1018H    **Lot. No.** (See product label)

## SPECIFICATION

### Product Overview

GOLGA3 MS Standard C13 and N15-labeled recombinant protein (NP\_005886) with a C-terminal MYC/DDK tag, was expressed in HEK293 cells.

### Species

Human

### Source

HEK293

### Description

The Golgi apparatus, which participates in glycosylation and transport of proteins and lipids in the secretory pathway, consists of a series of stacked cisternae (flattened membrane sacs). Interactions between the Golgi and microtubules are thought to be important for the reorganization of the Golgi after it fragments during mitosis. This gene encodes a member of the golgin family of proteins which are localized to the Golgi. Its encoded protein has been postulated to play a role in nuclear transport and Golgi apparatus localization. Several alternatively spliced transcript variants that encode different protein isoforms have been described for this gene.

### Molecular Mass

167.2 kDa

### AA Sequence

MDGASAEQDGLQEDRSHSGPSSLPEAPLKPPGPLVPPDQQDKVQCAEVNRSTEG  
 ESPDGPQGGLQCQNGPTPPFPDPPSSLDPTTSPVGPDASPGVAGFHDNLRKSQGT  
 SAEGSVRKEALQSLRSLPMQETQLCSTDSPLPLEKEEQVRLQARKWLEEQLKQYR  
 VKRQQRSSQPATKTRLFSTLDPPELMLNPENLPRASTLAMTKEYSFLRTSVPRGPK  
 VGSLGLPAHPREKKTSKSSKIRSLADYRTEDSNAGNSGGNVPAPDSTKGLKQNRS

 Tel: 1-631-559-9269    1-516-512-3133

 Email: [info@creative-biomart.com](mailto:info@creative-biomart.com)     Fax: 1-631-938-8127

 45-1 Ramsey Road, Shirley, NY 11967, USA

SAASVVSEISLSPDTDDRLENTSLAGDSVSEVDGNDSDSSSYSSASTRGTYGILSKT  
 VGTQDTPYMVNGQEIPADTLGQFPSIKDVLQAAAAEHQDQGQEVNGEVRSRRDSIC  
 SSVSLESSAAETQEEMLQVLKEKMRLEGQLEALSLEASQALKEKAELQAQLAALSTK  
 LQAQVECSHSSQQRQDLSSEVDTLKQSCWDLERAMTDLQNMLEAKNASLASSNN  
 DLQVAEEQYQRLMAKVEDMQRSMLSKDNTVHDLRQQMTALQSQLQQVQLERTTLT  
 SKLKASQAEISSLQSVRQWYQQQLALAQEARVRLQGEMAHIQVGQMTQAGLLEHL  
 KLENVLSQQLTETQHRSMEKEKGRIAAQLQGIADMLDQEAAFMIQEAKTMVEED  
 LQRRLEEFEGERERLQRMADSAASLEQQLEQVKLTLLQRDQQLQEQEHLDMK  
 QLTLTQEALQSREQSLDALQTHYDELQARLGELQGEAASREDTICLLQNEKIILEAAL  
 QAAKSGKEELDRGARRLEEGTEETSETLEKLREELAIKSGQVEHLQQETAALKKQM  
 QKIKEQFLQQKVMVEAYRRDATSKDQLISELKATRKRDLSELKELRQELMQVHGEK  
 RTAEAELSRLHREVAQVRQHMADLEGHLQSAQKERDEMETHLQSLQFDKEQMVAV  
 TEANEALKKQIEELQQEARKAITEQKQKMRRLGSDLTSAQKEMKTKHKAYENAVGIL  
 SRRLQEALAAKEAADAELGQLRAQGGSSDSSLALHERIQALEAELQAVSHSKTLLEK  
 ELQEVIALTQSQELESREKVLELEDELQESRGFRKKIKRLEESNKKLALLEHEKGL  
 TGLGQSNAALREHNSILETALAKREADLVQLNLQVQAVLQRKEEEDRQMKHLVQAL  
 QASLEKEKEKVNSLKEQVAAAKVEAGHNRRHFKAASLELSEVKKELQAKEHLVQKL  
 QAEADDLQIREGKHSQEIAQFQAEAEARAQLQLLQKQLDEQLSKQPVGNQEMENL  
 KWEVDQKEREIQLKQQLDLTEQQGRKELEGLQQLLNQVKSELEMAQEDLSMTQK  
 DKFMLQAKVSELKNNMKTLLQQNQQLKLDLRRGAAKTRKEPKGEASSNPATPIKIP  
 DCPVPASLLEELLRPPPAVSKEPLKNLNSCLQQLKQEMDSLQRQMEEHALTVHESL  
 SSWTPLEPATASPVPPGGHAGPRGDPQRHSQSRASKEGPGETRTRPLEQKLISEE  
 DLAANDILDYKDDDDKV

**Purity** > 80% as determined by SDS-PAGE and Coomassie blue staining

**Stability** Stable for 3 months from receipt of products under proper storage and handling conditions.

**Storage** Store at -80 centigrade. Avoid repeated freeze-thaw cycles.

 Tel: 1-631-559-9269 1-516-512-3133

 Email: [info@creative-biomart.com](mailto:info@creative-biomart.com)  Fax: 1-631-938-8127

 45-1 Ramsey Road, Shirley, NY 11967, USA

**Concentration** 50 µg/mL as determined by BCA

**Storage Buffer** 100 mM glycine, 25 mM Tris-HCl, pH 7.3.

## GENE INFORMATION

**Gene Name** [GOLGA3 golgin A3 \[ Homo sapiens \(human\) \]](#)

**Official Symbol** [GOLGA3](#)

**Synonyms** GOLGA3; golgin A3; golgi autoantigen, golgin subfamily a, 3; Golgin subfamily A member 3; GCP170; Golgi complex associated protein of 170 kD; golgin 160; MEA 2; SY2/SY10 protein; golgin-160; golgin-165; male enhanced antigen-2; Golgi membrane associated protein; Golgi peripheral membrane protein; golgi complex-associated protein of 170 kDa; MEA-2;

**Gene ID** [2802](#)

**mRNA Refseq** [NM\\_005895](#)

**Protein Refseq** [NP\\_005886](#)

**MIM** [602581](#)

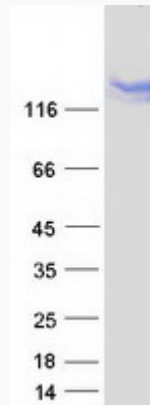
**UniProt ID** [Q08378](#)

 Tel: 1-631-559-9269 1-516-512-3133

 Email: [info@creative-biomart.com](mailto:info@creative-biomart.com)  Fax: 1-631-938-8127

 45-1 Ramsey Road, Shirley, NY 11967, USA

**SDS-PAGE**



 Tel: 1-631-559-9269 1-516-512-3133

 Email: [info@creative-biomart.com](mailto:info@creative-biomart.com)  Fax: 1-631-938-8127

 45-1 Ramsey Road, Shirley, NY 11967, USA