

Recombinant Human GOLIM4 Protein, GST-tagged

Cat. No. GOLIM4-5115H Lot. No. (See product label)

SPECIFICATION

Product Overview	Human GOLPH4 partial ORF (NP_055313, 473 a.a. - 568 a.a.) recombinant protein with GST-tag at N-terminal.
Species	Human
Source	Wheat Germ
Description	The Golgi complex plays a key role in the sorting and modification of proteins exported from the endoplasmic reticulum. The protein encoded by this gene is a type II Golgi-resident protein. It may process proteins synthesized in the rough endoplasmic reticulum and assist in the transport of protein cargo through the Golgi apparatus. [provided by RefSeq]
Molecular Mass	36.3 kDa
AA Sequence	HQEQLRQQAHYDAMDNDIVQGAEDQGIQGEEGAYERDNQHQDEAEGDPG NRHEP REQGPREADPESEADRAAVEDINPADDPNNQGEDEFEEAEQV
Applications	Enzyme-linked Immunoabsorbent Assay Western Blot (Recombinant protein) Antibody Production Protein Array
Notes	Best use within three months from the date of receipt of this protein.

 Tel: 1-631-559-9269 1-516-512-3133

 Email: info@creative-biomart.com  Fax: 1-631-938-8127

 45-1 Ramsey Road, Shirley, NY 11967, USA

Storage Store at -80 centigrade. Aliquot to avoid repeated freezing and thawing.

Storage Buffer 50 mM Tris-HCl, 10 mM reduced Glutathione, pH=8.0 in the elution buffer.

GENE INFORMATION

Gene Name [GOLIM4 golgi integral membrane protein 4 \[Homo sapiens \]](#)

Official Symbol [GOLIM4](#)

Synonyms GOLIM4; golgi integral membrane protein 4; golgi phosphoprotein 4, GOLPH4; Golgi integral membrane protein 4; GIMPC; GPP130; P138; golgi phosphoprotein 4; type II Golgi membrane protein; golgi phosphoprotein of 130 kDa; golgi integral membrane protein, cis; 130 kDa golgi-localized phosphoprotein; golgi-localized phosphoprotein of 130 kDa; cis Golgi-localized calcium-binding protein; GOLPH4;

Gene ID [27333](#)

mRNA Refseq [NM_014498](#)

Protein Refseq [NP_055313](#)

MIM [606805](#)

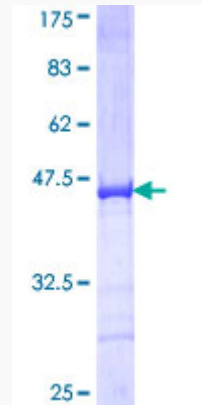
UniProt ID [O00461](#)

 Tel: 1-631-559-9269 1-516-512-3133

 Email: info@creative-biomart.com  Fax: 1-631-938-8127

 45-1 Ramsey Road, Shirley, NY 11967, USA

**Quality Control
Testing**



12.5% SDS-PAGE Stained with Coomassie Blue.

 Tel: 1-631-559-9269 1-516-512-3133

 Email: info@creative-biomart.com  Fax: 1-631-938-8127

 45-1 Ramsey Road, Shirley, NY 11967, USA