

## Recombinant Human GOLIM4 protein, His-tagged

Cat. No. GOLIM4-7856H Lot. No. (See product label)

### SPECIFICATION

<b>Product Overview</b>	Recombinant Human GOLIM4 protein(350-500 aa), fused with N-terminal His tag, was expressed in E. coli.
<b>Species</b>	Human
<b>Source</b>	E. coli
<b>ProteinLength</b>	350-500 aa
<b>Form</b>	The purified protein was lyophilized from sterile phosphate-buffered saline (PBS: 58 mM Na <sub>2</sub> HPO <sub>4</sub> , 17 mM NaH <sub>2</sub> PO <sub>4</sub> , 68 mM NaCl, pH 7.4). Prior to lyophilization, 5% (w/v) trehalose and 5% (w/v) mannitol were incorporated as cryoprotective excipients. The protein was eluted with a buffer containing 300 mM imidazole.
<b>AASequence</b>	QVGQAEHLEEEHDPSPEEQDREWKEQHEQREAAANLLEGHARAEVYPSAKPMIKFQ SPYEEQLEQQRLAVQQVEEAQQLREHQEALHQQLRQGHLLRQQEQQQQVAREM ALQRQAELEEGRPQHQEQLRQQAHYDAMDNDIVQGAEDQGIQ
<b>Purity</b>	85%, by SDS-PAGE.
<b>Storage</b>	Store at 2-8°C for 1-2 weeks. Aliquot and store at -20°C to -80°C for up to 3 months, reconstitution with sterile water and addition of an equal volume of glycerol. Avoid repeat freeze-thaw cycles.
<b>Reconstitution</b>	It is recommended that sterile water be added to the vial to prepare a stock solution of

 Tel: 1-631-559-9269 1-516-512-3133

 Email: [info@creative-biomart.com](mailto:info@creative-biomart.com)  Fax: 1-631-938-8127

 45-1 Ramsey Road, Shirley, NY 11967, USA

0.25 ug/ul. Centrifuge the vial at 4°C before opening to recover the entire contents.

## GENE INFORMATION

**Gene Name** [GOLIM4 golgi integral membrane protein 4 \[ Homo sapiens \]](#)

**Official Symbol** [GOLIM4](#)

**Synonyms** GOLIM4; golgi integral membrane protein 4; golgi phosphoprotein 4 , GOLPH4; Golgi integral membrane protein 4; GIMPC; GPP130; P138; golgi phosphoprotein 4; type II Golgi membrane protein; golgi phosphoprotein of 130 kDa; golgi integral membrane protein, cis; 130 kDa golgi-localized phosphoprotein; golgi-localized phosphoprotein of 130 kDa; cis Golgi-localized calcium-binding protein; GOLPH4;

**mRNA Refseq** [NM\\_014498](#)

**Protein Refseq** [NP\\_055313](#)

**MIM** [606805](#)

**UniProt ID** [O00461](#)

**Gene ID** [27333](#)

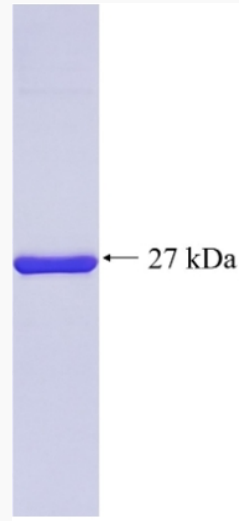
 Tel: 1-631-559-9269 1-516-512-3133

 Email: [info@creative-biomart.com](mailto:info@creative-biomart.com)  Fax: 1-631-938-8127

 45-1 Ramsey Road, Shirley, NY 11967, USA



SDS-PAGE



Tel: 1-631-559-9269 1-516-512-3133

Email: [info@creative-biomart.com](mailto:info@creative-biomart.com) Fax: 1-631-938-8127

45-1 Ramsey Road, Shirley, NY 11967, USA