

# Recombinant Full Length Human GOLM1 Protein, C-Flag-tagged

**Cat. No.** GOLM1-1292HFL    **Lot. No.** (See product label)

## SPECIFICATION

<b>Product Overview</b>	Recombinant Full Length Human GOLM1 Protein, fused to Flag-tag at C-terminus, was expressed in Mammalian cells.
<b>Species</b>	Human
<b>Source</b>	Mammalian Cells
<b>Description</b>	The Golgi complex plays a key role in the sorting and modification of proteins exported from the endoplasmic reticulum. The protein encoded by this gene is a type II Golgi transmembrane protein. It processes proteins synthesized in the rough endoplasmic reticulum and assists in the transport of protein cargo through the Golgi apparatus. The expression of this gene has been observed to be upregulated in response to viral infection. Alternatively spliced transcript variants encoding the same protein have been described for this gene.
<b>Form</b>	25 mM Tris HCl, pH 7.3, 100 mM glycine, 10% glycerol.
<b>Molecular Mass</b>	45.2 kDa
<b>AA Sequence</b>	MMGLGNGRRSMKSPPLVLAALVACIIVLGFNYWASSRSVDLQTRIMELEGRVRRAA AERGAVELKKNEF QGELEKQREQLDKIQSSHNFQLESVNKLYQDEKAVLVNNITG ERLIRVLQDQLKTLQRNYGRLQQDVLQ FQKNQTNLERKFSYDLSQCINQMKEVKEQ CEERIEEVTKKGNEAVASRDLSNNDQRQQQLQALSEPQPRL QAAGLPHTVEVPQ GK GNVLGNSKSQTPAPSSSEVVLD SKRQVEKEETNEIQVVNEEPQRDRLPQEPGREQV

 Tel: 1-631-559-9269    1-516-512-3133

 Email: [info@creative-biomart.com](mailto:info@creative-biomart.com)     Fax: 1-631-938-8127

 45-1 Ramsey Road, Shirley, NY 11967, USA

V EDRPVGGRGFGGAGELGQTPQVQAALSVSQENPEMEGPERDQLVIPDGQEEEQ  
 EAAGEGRNQQLRGEDD  
 YNMDENEAESETDKQAALAGNDRNIDVFNVEDQKRDTINLLDQREKRNHTLTRTRP  
 LEQKLISEEDLAANDILDYKDDDDKV


<b>Purity</b>	> 80% as determined by SDS-PAGE and Coomassie blue staining.
<b>Stability</b>	Stable for 12 months from the date of receipt of the product under proper storage and handling conditions. Avoid repeated freeze-thaw cycles.
<b>Storage</b>	Store at -80 centigrade.
<b>Concentration</b>	>50 ug/mL as determined by microplate BCA method.
<b>Preparation</b>	Recombinant protein was captured through anti-DDK affinity column followed by conventional chromatography steps.
<b>Protein Families</b>	Transmembrane
<b>Full Length</b>	Full L.

## GENE INFORMATION

<b>Gene Name</b>	GOLM1 golgi membrane protein 1 [ Homo sapiens (human) ]
<b>Official Symbol</b>	GOLM1
<b>Synonyms</b>	GP73; HEL46; GOLPH2; C9orf155; PSEC0257; bA379P1.3
<b>Gene ID</b>	51280

 Tel: 1-631-559-9269 1-516-512-3133

 Email: [info@creative-biomart.com](mailto:info@creative-biomart.com)  Fax: 1-631-938-8127

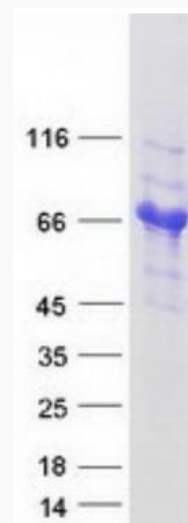
 45-1 Ramsey Road, Shirley, NY 11967, USA

mRNA Refseq [NM\\_016548.4](#)


Protein Refseq [NP\\_057632.2](#)

MIM [606804](#)


UniProt ID [Q8NBJ4](#)



Coomassie blue staining of purified GOLM1 protein.

 Tel: 1-631-559-9269 1-516-512-3133

 Email: [info@creative-biomart.com](mailto:info@creative-biomart.com)  Fax: 1-631-938-8127

 45-1 Ramsey Road, Shirley, NY 11967, USA