

Recombinant Human GOLM1 protein, His & GST-tagged

Cat. No. GOLM1-1781H Lot. No. (See product label)

SPECIFICATION

Product Overview	Recombinant Human GOLM1 aa. (Val119~Gly223 (Accession # Q8NBJ4)) fused with N-terminal His & GST tag was produced in E. coli cells.
Species	Human
Source	E.coli
ProteinLength	Val119~Gly223
Form	Freeze-dried powder
Molecular Mass	Predicted Molecular Mass: 44.6kDa
Endotoxin	<1.0EU per 1ug (determined by the LAL method)
Purity	>95%
Characteristic	The isoelectric point is 6.2.
Applications	SDS-PAGE; WB; ELISA; IP.
Stability	The thermal stability is described by the loss rate of the target protein. The loss rate was determined by accelerated thermal degradation test, that is, incubate the protein at 37°C for 48h, and no obvious degradation and precipitation were observed. (Referring from China Biological Products Standard, which was calculated by the

 Tel: 1-631-559-9269 1-516-512-3133

 Email: info@creative-biomart.com  Fax: 1-631-938-8127

 45-1 Ramsey Road, Shirley, NY 11967, USA

Arrhenius equation.) The loss of this protein is less than 5% within the expiration date under appropriate storage condition.

Storage

Avoid repeated freeze/thaw cycles. Store at 2-8°C for one month. Aliquot and store at -80°C for 12 months.

Storage buffer

Supplied as lyophilized form in 20mM Tris, 500mM NaCl, pH8.0, containing 1mM EDTA, 1mM DTT, 0.01% sarcosyl, 5% trehalose, and preservative.

Reconstitution

Reconstitute in sterile PBS, pH7.2-pH7.4.

GENE INFORMATION

Gene Name

GOLM1 golgi membrane protein 1 [Homo sapiens (human)]

Official Symbol

GOLM1

Synonyms

GOLM1; golgi membrane protein 1; GP73; HEL46; GOLPH2; C9orf155; PSEC0257; bA379P1.3; Golgi membrane protein 1; epididymis luminal protein 46; golgi membrane protein GP73; golgi phosphoprotein 2; golgi protein, 73-kD

Gene ID

51280

mRNA Refseq

NM_016548.3

Protein Refseq

NP_057632.2

UniProt ID

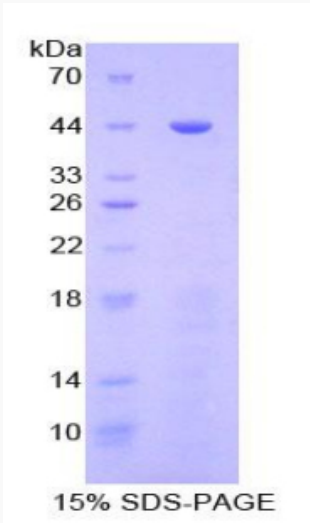
Q8NBJ4

 Tel: 1-631-559-9269 1-516-512-3133

 Email: info@creative-biomart.com  Fax: 1-631-938-8127

 45-1 Ramsey Road, Shirley, NY 11967, USA

SDS-PAGE



 Tel: 1-631-559-9269 1-516-512-3133

 Email: info@creative-biomart.com  Fax: 1-631-938-8127

 45-1 Ramsey Road, Shirley, NY 11967, USA