

Recombinant Human GOLM1 Protein (Val40-Leu401), C-His tagged

Cat. No. GOLM1-3542H **Lot. No.** (See product label)

SPECIFICATION

Product Overview	Recombinant human GOLM1 (Val40-Leu401) protein fused with the C-His tag was expressed in E. coli.
Species	Human
Source	E.coli
ProteinLength	Val40-Leu401
Molecular Mass	43.48 kDa
Purity	>90 % as determined by SDS-PAGE.
Notes	For research use only.
Storage	Use a manual defrost freezer and avoid repeated freeze thaw cycles. Store at 2 to 8 centigrade for one week. Store at -20 to -80 centigrade for twelve months from the date of receipt.
Storage Buffer	0.01M PBS, pH 7.4, 0.02 % NLS
Reconstitution	Reconstitute in sterile water for a stock solution.
Shipping	In general, proteins are provided as lyophilized powder/frozen liquid. They are

 Tel: 1-631-559-9269 1-516-512-3133

 Email: info@creative-biomart.com  Fax: 1-631-938-8127

 45-1 Ramsey Road, Shirley, NY 11967, USA

shipped out with dry ice/blue ice unless customers require otherwise.

GENE INFORMATION

Gene Name GOLM1 golgi membrane protein 1 [Homo sapiens (human)]

Official Symbol GOLM1

Synonyms GOLM1; golgi membrane protein 1; C9orf155, chromosome 9 open reading frame 155, golgi phosphoprotein 2, GOLPH2; Golgi membrane protein 1; bA379P1.3; FLJ23608; GP73; golgi protein, 73-kD; golgi phosphoprotein 2; golgi membrane protein GP73; GOLPH2; C9orf155; PSEC0257; FLJ22634;

Gene ID 51280

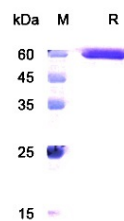
mRNA Refseq NM_016548

Protein Refseq NP_057632

MIM 606804

UniProt ID Q8NBJ4

SDS-PAGE



 Tel: 1-631-559-9269 1-516-512-3133

 Email: info@creative-biomart.com  Fax: 1-631-938-8127

 45-1 Ramsey Road, Shirley, NY 11967, USA