

Recombinant Human GOLM1 Protein (Ser35-Leu400), C-His tagged

Cat. No. GOLM1-3543H **Lot. No.** (See product label)

SPECIFICATION

| | |
|-------------------------|---|
| Product Overview | Recombinant human GOLM1 (Ser35-Leu400) protein fused with the C-terminal His tag was expressed in Mammalian cells. |
| Species | Human |
| Source | Mammalian Cells |
| ProteinLength | Ser35-Leu400 |
| Molecular Mass | 42.5 kDa |
| Purity | >90 % as determined by SDS-PAGE. |
| Notes | For research use only. |
| Storage | Use a manual defrost freezer and avoid repeated freeze thaw cycles. Store at 2 to 8 centigrade for one week. Store at -20 to -80 centigrade for twelve months from the date of receipt. |
| Storage Buffer | Supplied as solution form in PBS or lyophilized from PBS. |
| Reconstitution | Reconstitute in sterile water for a stock solution. |
| Shipping | In general, proteins are provided as lyophilized powder/frozen liquid. They are |

 Tel: 1-631-559-9269 1-516-512-3133

 Email: info@creative-biomart.com  Fax: 1-631-938-8127

 45-1 Ramsey Road, Shirley, NY 11967, USA

shipped out with dry ice/blue ice unless customers require otherwise.

GENE INFORMATION

Gene Name GOLM1 golgi membrane protein 1 [Homo sapiens (human)]

Official Symbol GOLM1

Synonyms GOLM1; golgi membrane protein 1; C9orf155, chromosome 9 open reading frame 155, golgi phosphoprotein 2, GOLPH2; Golgi membrane protein 1; bA379P1.3; FLJ23608; GP73; golgi protein, 73-kD; golgi phosphoprotein 2; golgi membrane protein GP73; GOLPH2; C9orf155; PSEC0257; FLJ22634;

Gene ID 51280

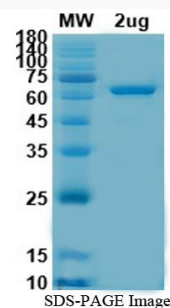
mRNA Refseq NM_016548

Protein Refseq NP_057632

MIM 606804

UniProt ID Q8NBJ4

SDS-PAGE



 Tel: 1-631-559-9269 1-516-512-3133

 Email: info@creative-biomart.com  Fax: 1-631-938-8127

 45-1 Ramsey Road, Shirley, NY 11967, USA