

Recombinant Human GOLM1 Protein (Ser35-Leu400), His tagged

Cat. No. GOLM1-3544H Lot. No. (See product label)

SPECIFICATION

| | |
|-------------------------|---|
| Product Overview | Recombinant human GOLM1 (Ser35-Leu400) protein fused with the His tag was expressed in E. coli. |
| Species | Human |
| Source | E.coli |
| ProteinLength | Ser35-Leu400 |
| Description | Unknown. Cellular response protein to viral infection. |
| Molecular Mass | 39.86 kDa |
| Purity | >90 % as determined by SDS-PAGE. |
| Notes | For research use only. |
| Storage | Use a manual defrost freezer and avoid repeated freeze thaw cycles. Store at 2 to 8 centigrade for one week. Store at -20 to -80 centigrade for twelve months from the date of receipt. |
| Storage Buffer | Supplied as solution form in PBS pH 7.5 or lyophilized from PBS pH 7.5. |
| Reconstitution | Reconstitute in sterile water for a stock solution. |

 Tel: 1-631-559-9269 1-516-512-3133

 Email: info@creative-biomart.com  Fax: 1-631-938-8127

 45-1 Ramsey Road, Shirley, NY 11967, USA

Shipping

In general, proteins are provided as lyophilized powder/frozen liquid. They are shipped out with dry ice/blue ice unless customers require otherwise.

GENE INFORMATION

Gene Name GOLM1 golgi membrane protein 1 [Homo sapiens (human)]

Official Symbol GOLM1

Synonyms

GOLM1; golgi membrane protein 1; C9orf155, chromosome 9 open reading frame 155, golgi phosphoprotein 2, GOLPH2; Golgi membrane protein 1; bA379P1.3; FLJ23608; GP73; golgi protein, 73-kD; golgi phosphoprotein 2; golgi membrane protein GP73; GOLPH2; C9orf155; PSEC0257; FLJ22634;

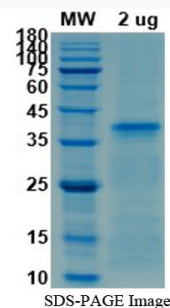
Gene ID 51280

mRNA Refseq NM_016548

Protein Refseq NP_057632

MIM 606804

UniProt ID Q8NBJ4

SDS-PAGE


 Tel: 1-631-559-9269 1-516-512-3133

 Email: info@creative-biomart.com  Fax: 1-631-938-8127

 45-1 Ramsey Road, Shirley, NY 11967, USA