

Recombinant Human GOLM1 Protein, GST-tagged

Cat. No. GOLM1-5112H Lot. No. (See product label)

SPECIFICATION

Product Overview	Human GOLM1 partial ORF (NP_057632, 302 a.a. - 401 a.a.) recombinant protein with GST-tag at N-terminal.
Species	Human
Source	Wheat Germ
Description	The Golgi complex plays a key role in the sorting and modification of proteins exported from the endoplasmic reticulum. The protein encoded by this gene is a type II Golgi transmembrane protein. It processes proteins synthesized in the rough endoplasmic reticulum and assists in the transport of protein cargo through the Golgi apparatus. The expression of this gene has been observed to be upregulated in response to viral infection. Alternatively spliced transcript variants encoding the same protein have been described for this gene. [provided by RefSeq]
Molecular Mass	36.74 kDa
AA Sequence	VQAALSVSQENPEMEGPERDQLVIPDGQEEEQEAAGEGRNQKLRGEDDYNMDE NEASETDKQAALAGNDRNIDVFNVEDQKRDTINLLDQREKRNHTL
Applications	Enzyme-linked Immunoabsorbent Assay Western Blot (Recombinant protein) Antibody Production Protein Array

 Tel: 1-631-559-9269 1-516-512-3133

 Email: info@creative-biomart.com  Fax: 1-631-938-8127

 45-1 Ramsey Road, Shirley, NY 11967, USA

Notes	Best use within three months from the date of receipt of this protein.
Storage	Store at -80 centigrade. Aliquot to avoid repeated freezing and thawing.
Storage Buffer	50 mM Tris-HCl, 10 mM reduced Glutathione, pH=8.0 in the elution buffer.

GENE INFORMATION

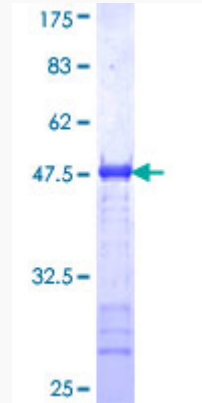
Gene Name	GOLM1 golgi membrane protein 1 [Homo sapiens]
Official Symbol	GOLM1
Synonyms	GOLM1; golgi membrane protein 1; C9orf155, chromosome 9 open reading frame 155, golgi phosphoprotein 2, GOLPH2; Golgi membrane protein 1; bA379P1.3; FLJ23608; GP73; golgi protein, 73-kD; golgi phosphoprotein 2; golgi membrane protein GP73; GOLPH2; C9orf155; PSEC0257; FLJ22634;
Gene ID	51280
mRNA Refseq	NM_016548
Protein Refseq	NP_057632
MIM	606804
UniProt ID	Q8NBJ4

 Tel: 1-631-559-9269 1-516-512-3133

 Email: info@creative-biomart.com  Fax: 1-631-938-8127

 45-1 Ramsey Road, Shirley, NY 11967, USA

**Quality Control
Testing**



12.5% SDS-PAGE Stained with Coomassie Blue.

 Tel: 1-631-559-9269 1-516-512-3133

 Email: info@creative-biomart.com  Fax: 1-631-938-8127

 45-1 Ramsey Road, Shirley, NY 11967, USA