

Recombinant Human GOLPH3 Protein, GST-tagged

Cat. No. GOLPH3-5113H **Lot. No.** (See product label)

SPECIFICATION

Product Overview	Human GOLPH3 full-length ORF (NP_071413.1, 1 a.a. - 298 a.a.) recombinant protein with GST-tag at N-terminal.
Species	Human
Source	Wheat Germ
Description	The Golgi complex plays a key role in the sorting and modification of proteins exported from the endoplasmic reticulum. The protein encoded by this gene is a peripheral membrane protein of the Golgi stack and may have a regulatory role in Golgi trafficking. Several alternatively spliced transcript variants of this gene have been described, but the full-length nature of these variants has not been determined. [provided by RefSeq]
Molecular Mass	60.2 kDa
AA Sequence	MTSLTQRSSGLVQRRTEASRNAADKERAAGGGAGSSEDDAQSRDEQDDDDKGD SKETRLTLMEEVLLLGLKDREGYTSFWNDCISSGLRGCMLIELALRGRLQLEACGMR RKSLLTRKVICKSDAPTGDVLLDEALKHVKETQPPETVQNWIELLSGETWNPLKLHY QLRNVRERLAKNLVEKGVLTTEKQNFLLFDMTTHPLTNNNIKQRLIKKVQEAVLDKW VNDPHRMDRRLALALIYLAHASDVLENAFAPLLDEQYDLATKRVRQLLDLDPVEVECLK ANTNEVLWAVVAAFTK
Applications	Enzyme-linked Immunoabsorbent Assay Western Blot (Recombinant protein)

 Tel: 1-631-559-9269 1-516-512-3133

 Email: info@creative-biomart.com  Fax: 1-631-938-8127

 45-1 Ramsey Road, Shirley, NY 11967, USA

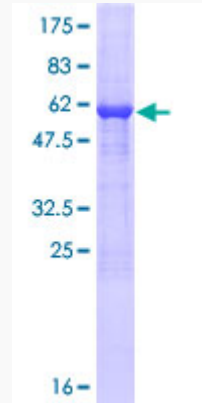
	Antibody Production Protein Array
Notes	Best use within three months from the date of receipt of this protein.
Storage	Store at -80 centigrade. Aliquot to avoid repeated freezing and thawing.
Storage Buffer	50 mM Tris-HCl, 10 mM reduced Glutathione, pH=8.0 in the elution buffer.
GENE INFORMATION	
Gene Name	GOLPH3 golgi phosphoprotein 3 (coat-protein) [Homo sapiens]
Official Symbol	GOLPH3
Synonyms	GOLPH3; golgi phosphoprotein 3 (coat-protein); Golgi phosphoprotein 3; coat protein; golgi peripheral membrane protein 1; 34 kDa; golgi protein; golgi associated protein; GOPP1; GPP34; MIDAS; coat-protein; coat protein GPP34; golgi-associated protein; mitochondrial DNA absence factor; golgi peripheral membrane protein 1, 34 kDa; FLJ90675;
Gene ID	64083
mRNA Refseq	NM_022130
Protein Refseq	NP_071413
MIM	612207
UniProt ID	Q9H4A6

 Tel: 1-631-559-9269 1-516-512-3133

 Email: info@creative-biomart.com  Fax: 1-631-938-8127

 45-1 Ramsey Road, Shirley, NY 11967, USA

**Quality Control
Testing**



12.5% SDS-PAGE Stained with Coomassie Blue.

 Tel: 1-631-559-9269 1-516-512-3133

 Email: info@creative-biomart.com  Fax: 1-631-938-8127

 45-1 Ramsey Road, Shirley, NY 11967, USA