

## Recombinant Human GOLPH3L Protein, GST-tagged

**Cat. No.** GOLPH3L-5114H    **Lot. No.** (See product label)

### SPECIFICATION

<b>Product Overview</b>	Human GOLPH3L full-length ORF ( NP_060648.2, 1 a.a. - 285 a.a.) recombinant protein with GST-tag at N-terminal.
<b>Species</b>	Human
<b>Source</b>	Wheat Germ
<b>Description</b>	The Golgi complex plays a key role in the sorting and modification of proteins exported from the endoplasmic reticulum. The protein encoded by this gene is localized at the Golgi stack and may have a regulatory role in Golgi trafficking. [provided by RefSeq]
<b>Molecular Mass</b>	59.2 kDa
<b>AA Sequence</b>	MTTLTHRARRTEISKNSEKKMESEEDSNWEKSPDNEDSGDSKDIRLTLMEEVLLLGL KDKEGYTSFWNDCISSGLRGGILIELAMRGRIYLEPPTMRKKRLLDRKVLLKSDSPTG DVLLDETLKHIKATEPTETVQTWIELLTGETWNPFKLQYQLRNVRERIAKNLVEKGILT TEKQNFLLFDMTTHPVNTTTEKQRLVKKLQDSVLERWVNDPQRMDKRTLALLVLAH SSDVLENVFSSLTDDKYDVAMNRAKDLVELDPEVEGTKPSATEMIWAVLAAFNKS
<b>Applications</b>	Enzyme-linked Immunoabsorbent Assay Western Blot (Recombinant protein) Antibody Production Protein Array

 Tel: 1-631-559-9269    1-516-512-3133

 Email: [info@creative-biomart.com](mailto:info@creative-biomart.com)     Fax: 1-631-938-8127

 45-1 Ramsey Road, Shirley, NY 11967, USA

<b>Notes</b>	Best use within three months from the date of receipt of this protein.
<b>Storage</b>	Store at -80 centigrade. Aliquot to avoid repeated freezing and thawing.
<b>Storage Buffer</b>	50 mM Tris-HCl, 10 mM reduced Glutathione, pH=8.0 in the elution buffer.

## GENE INFORMATION

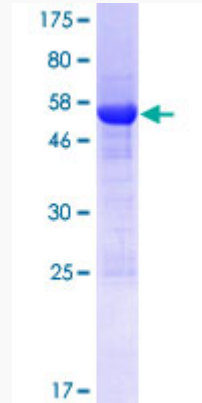
<b>Gene Name</b>	GOLPH3L golgi phosphoprotein 3-like [ Homo sapiens ]
<b>Official Symbol</b>	GOLPH3L
<b>Synonyms</b>	GPP34R; GOLPH3L; golgi phosphoprotein 3-like; Golgi Phosphoprotein 3 Like; Golgi Phosphoprotein 3-Like; GPP34-Related Protein; GPP34R
<b>Gene ID</b>	55204
<b>mRNA Refseq</b>	NM_018178
<b>Protein Refseq</b>	NP_060648
<b>MIM</b>	612208
<b>UniProt ID</b>	Q9H4A5

 Tel: 1-631-559-9269 1-516-512-3133

 Email: [info@creative-biomart.com](mailto:info@creative-biomart.com)  Fax: 1-631-938-8127

 45-1 Ramsey Road, Shirley, NY 11967, USA

**Quality Control  
Testing**



12.5% SDS-PAGE Stained with Coomassie Blue.

 Tel: 1-631-559-9269 1-516-512-3133

 Email: [info@creative-biomart.com](mailto:info@creative-biomart.com)  Fax: 1-631-938-8127

 45-1 Ramsey Road, Shirley, NY 11967, USA