

## Recombinant Human GOLT1B Protein, GST-tagged

Cat. No. GOLT1B-5117H Lot. No. (See product label)

### SPECIFICATION

<b>Product Overview</b>	Human GOLT1B full-length ORF ( AAH12455.1, 1 a.a. - 138 a.a.) recombinant protein with GST-tag at N-terminal.
<b>Species</b>	Human
<b>Source</b>	Wheat Germ
<b>Description</b>	GOLT1B (Golgi Transport 1B) is a Protein Coding gene. GO annotations related to this gene include signal transducer activity and lipase activity. An important paralog of this gene is GOLT1A.
<b>Molecular Mass</b>	40.92 kDa
<b>AA Sequence</b>	MISLTDTQKIGMGLTGFGVFFLFFGMILFFDKALLAIGNVLFVAGLAFVIGLERTFRFFF QKHMKMATGFFLGGVFVVLIGWPLIGMIFEIYGFFLLFRGFFPVVVGFIIRVPLGSL NLPGIRSFVDKVGESNNMV
<b>Applications</b>	Enzyme-linked Immunoabsorbent Assay Western Blot (Recombinant protein) Antibody Production Protein Array
<b>Notes</b>	Best use within three months from the date of receipt of this protein.
<b>Storage</b>	Store at -80 centigrade. Aliquot to avoid repeated freezing and thawing.

 Tel: 1-631-559-9269 1-516-512-3133

 Email: [info@creative-biomart.com](mailto:info@creative-biomart.com)  Fax: 1-631-938-8127

 45-1 Ramsey Road, Shirley, NY 11967, USA

**Storage Buffer** 50 mM Tris-HCl, 10 mM reduced Glutathione, pH=8.0 in the elution buffer.

## GENE INFORMATION

**Gene Name** GOLT1B golgi transport 1B [ Homo sapiens (human) ]

**Official Symbol** GOLT1B

**Synonyms** GOLT1B; golgi transport 1B; GCT2; GOT1; GOT1B; CGI-141; YMR292W; vesicle transport protein GOT1B; germ cell tumor 2; hGOT1a; putative NF-kappa-B-activating protein 470

**Gene ID** 51026

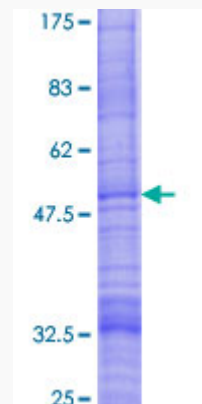
**mRNA Refseq** NM\_016072

**Protein Refseq** NP\_057156

**MIM** 615078

**UniProt ID** Q9Y3E0

**Quality Control Testing**



 Tel: 1-631-559-9269 1-516-512-3133

 Email: [info@creative-biomart.com](mailto:info@creative-biomart.com)  Fax: 1-631-938-8127

 45-1 Ramsey Road, Shirley, NY 11967, USA



12.5% SDS-PAGE Stained with Coomassie Blue.

 Tel: 1-631-559-9269 1-516-512-3133

 Email: [info@creative-biomart.com](mailto:info@creative-biomart.com)  Fax: 1-631-938-8127

 45-1 Ramsey Road, Shirley, NY 11967, USA