

Recombinant Human GORAB Protein, Myc/DDK-tagged, C13 and N15-labeled

Cat. No. GORAB-5384H **Lot. No.** (See product label)

SPECIFICATION

Product Overview	GORAB MS Standard C13 and N15-labeled recombinant protein (NP_689494) with a C-terminal MYC/DDK tag, was expressed in HEK293 cells.
Species	Human
Source	HEK293
Description	<p>This gene encodes a member of the golgin family, a group of coiled-coil proteins localized to the Golgi. The encoded protein may function in the secretory pathway.</p> <p>The encoded protein, which also localizes to the cytoplasm, was identified by interactions with the N-terminal kinase-like protein, and thus it may function in mitosis. Mutations in this gene have been associated with geroderma osteodysplastica. Alternatively spliced transcript variants have been described.</p>
Molecular Mass	44.8 kDa
AA Sequence	<pre>MSWAAVLAVAAARFGHFWGCRWPGPMAQGWAGFSEEELRRLKQTKDPFEPQRR LPAKKSRRQQLQREKALVEQSQKLGQLDQGSTLLPEQLLSAPKQRVNVQKPPFSSPT LPSHFTLTSPVGDGQPQGIESQPKELGLENSHDGHNNVEILPPKPDCKLEKKKVELQ EKSRWEVLQQEQRLMEEKNKRRKALLAKAIAERSKRTQAETMCLKRIQKELQALDD MVSADIGILRNRIDQASLDYSYARKRFDRAEAEYIAAKLDIQRKTEIKEQLTEHLCTIIQ QNELRKAKKLEELMQQLDVEADEETLELEVEVERLLHEQEVESSRRPVVRLERPFQP AEESVTLEFAKENRKCQEQA VSPKVDDQCGNSSSIPFLSPNCPNQEGNDISAALATT</pre>

 Tel: 1-631-559-9269 1-516-512-3133

 Email: info@creative-biomart.com  Fax: 1-631-938-8127

 45-1 Ramsey Road, Shirley, NY 11967, USA

RTRPLEQKLISEEDLAANDILDYKDDDDKV

Purity > 80% as determined by SDS-PAGE and Coomassie blue staining

Stability Stable for 3 months from receipt of products under proper storage and handling conditions.

Storage Store at -80 centigrade. Avoid repeated freeze-thaw cycles.

Concentration 50 µg/mL as determined by BCA

Storage Buffer 100 mM glycine, 25 mM Tris-HCl, pH 7.3.

GENE INFORMATION

Gene Name GORAB golgin, RAB6 interacting [Homo sapiens (human)]

Official Symbol GORAB

Synonyms GORAB; golgin, RAB6-interacting; SCY1 like 1 binding protein 1, SCYL1BP1; RAB6-interacting golgin; FLJ11752; gerodermia osteodysplastica; GO; NTKL BP1; SCYL1-BP1; hNTKL-BP1; NTKL-binding protein 1; SCYL1-binding protein 1; SCY1-like 1 binding protein 1; SCY1-like 1-binding protein 1; N-terminal kinase-like-binding protein 1; NTKLBP1; SCYL1BP1; MGC51263; MGC70512;

Gene ID 92344

mRNA Refseq NM_152281

Protein Refseq NP_689494

 Tel: 1-631-559-9269 1-516-512-3133

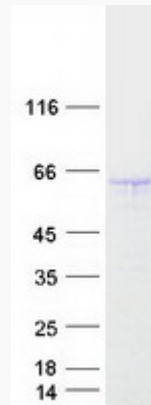
 Email: info@creative-biomart.com  Fax: 1-631-938-8127

 45-1 Ramsey Road, Shirley, NY 11967, USA

MIM 607983

UniProt ID Q5T7V8

SDS-PAGE



 Tel: 1-631-559-9269 1-516-512-3133

 Email: info@creative-biomart.com  Fax: 1-631-938-8127

 45-1 Ramsey Road, Shirley, NY 11967, USA