

# Recombinant Human GOSR1 Protein, Myc/DDK-tagged, C13 and N15-labeled

**Cat. No.** GOSR1-5533H    **Lot. No.** (See product label)

## SPECIFICATION

<b>Product Overview</b>	GOSR1 MS Standard C13 and N15-labeled recombinant protein (NP_001007025) with a C-terminal MYC/DDK tag, was expressed in HEK293 cells.
<b>Species</b>	Human
<b>Source</b>	HEK293
<b>Description</b>	This gene encodes a trafficking membrane protein which transports proteins among the endoplasmic reticulum and the Golgi and between Golgi compartments. This protein is considered an essential component of the Golgi SNAP receptor (SNARE) complex. Alternatively spliced transcript variants encoding distinct isoforms have been found for this gene.
<b>Molecular Mass</b>	28.61 kDa
<b>AA Sequence</b>	MAAGTSSYWEDLRKQARQLENELDLKLVSFSLKCTSYSHSSTRDGRDRYSSDTTP LLNGSSQDRMFETMAIEIEQLLARLTGVNDKMAEYTNAGVPSLNAALMHTLQRHR DILQDYTHEFHKTKANFMAIRERENLMGSRKDIKSYKSGGVNRRTELFLKEHDH LRNSDRLIEETISIAMATKENMTSQRGMLKSIHSMNTLANRFPVNSLIQRINLRKRR DSLILGGVIGICTILLLLYAFHTRTRPLEQKLISEEDLAANDILDYKDDDDKV
<b>Purity</b>	> 80% as determined by SDS-PAGE and Coomassie blue staining
<b>Stability</b>	Stable for 3 months from receipt of products under proper storage and handling

 Tel: 1-631-559-9269    1-516-512-3133

 Email: [info@creative-biomart.com](mailto:info@creative-biomart.com)     Fax: 1-631-938-8127

 45-1 Ramsey Road, Shirley, NY 11967, USA

conditions.

**Storage** Store at -80 centigrade. Avoid repeated freeze-thaw cycles.

**Concentration** 50 µg/mL as determined by BCA

**Storage Buffer** 100 mM glycine, 25 mM Tris-HCl, pH 7.3.

## GENE INFORMATION

**Gene Name** [GOSR1 golgi SNAP receptor complex member 1 \[ Homo sapiens \(human\) \]](#)

**Official Symbol** [GOSR1](#)

**Synonyms** GOSR1; golgi SNAP receptor complex member 1; Golgi SNAP receptor complex member 1; golgi integral membrane protein 2; GOLIM2; GOS 28; GOS28; GS28; P28; cis-golgi SNARE; Golgi SNARE 28 kDa; 28 kDa Golgi SNARE protein; 28 kDa cis-Golgi SNARE p28; GOS-28; GOS28/P28;

**Gene ID** [9527](#)

**mRNA Refseq** [NM\\_001007024](#)

**Protein Refseq** [NP\\_001007025](#)

**MIM** [604026](#)

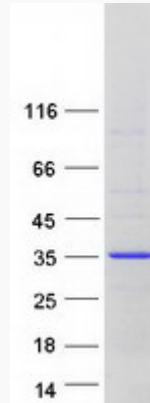
**UniProt ID** [O95249](#)

 Tel: 1-631-559-9269 1-516-512-3133

 Email: [info@creative-biomart.com](mailto:info@creative-biomart.com)  Fax: 1-631-938-8127

 45-1 Ramsey Road, Shirley, NY 11967, USA

**SDS-PAGE**



 Tel: 1-631-559-9269 1-516-512-3133

 Email: [info@creative-biomart.com](mailto:info@creative-biomart.com)  Fax: 1-631-938-8127

 45-1 Ramsey Road, Shirley, NY 11967, USA