

Recombinant Human GOSR2 Protein, MYC/DDK-tagged, C13 and N15-labeled

Cat. No. GOSR2-167H **Lot. No.** (See product label)

SPECIFICATION

Product Overview	GOSR2 MS Standard C13 and N15-labeled recombinant protein (NP_004278) with a C-terminal MYC/DDK tag, was expressed in HEK293 cells.
Species	Human
Source	HEK293
Description	This gene encodes a trafficking membrane protein which transports proteins among the medial- and trans-Golgi compartments. Due to its chromosomal location and trafficking function, this gene may be involved in familial essential hypertension. [provided by RefSeq, Mar 2016]
Molecular Mass	24.8 kDa
AA Sequence	MDPLFQQTHKQVHEIQSCMGRLETADKQSVHIVENEIQASIDQIFSRLEILSSKE PPNKRQNARLRVDQLKYDVQHLQTLALRNRFQHRRHAREQQERQRELLSRTFTTND SDTTIPMDESLQFNSSLQKVHNGMDDLILDGHNILDGLRTQRLTLKGTQKKILDIANM LGLSNTVMRLIEKRAFQDKYFMIGGMLLTCVVMFLVVQYLTTTRTRPLEQKLISEEDLA ANDILDYKDDDDKV
Purity	> 80% as determined by SDS-PAGE and Coomassie blue staining
Stability	Stable for 3 months from receipt of products under proper storage and handling conditions.

 Tel: 1-631-559-9269 1-516-512-3133

 Email: info@creative-biomart.com  Fax: 1-631-938-8127

 45-1 Ramsey Road, Shirley, NY 11967, USA

Storage	Store at -80 centigrade. Avoid repeated freeze-thaw cycles.
Concentration	50 µg/mL as determined by BCA
Storage Buffer	100 mM glycine, 25 mM Tris-HCl, pH 7.3.

GENE INFORMATION

Gene Name	GOSR2 golgi SNAP receptor complex member 2 [Homo sapiens (human)]
Official Symbol	GOSR2
Synonyms	GOSR2; golgi SNAP receptor complex member 2; Bos1; EPM6; GS27; Golgi SNAP receptor complex member 2; 27 kDa Golgi SNARE protein; membrin
Gene ID	9570
mRNA Refseq	NM_004287
Protein Refseq	NP_004278
MIM	604027
UniProt ID	O14653

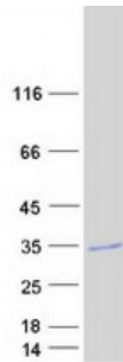
 Tel: 1-631-559-9269 1-516-512-3133

 Email: info@creative-biomart.com  Fax: 1-631-938-8127

 45-1 Ramsey Road, Shirley, NY 11967, USA



SDS-PAGE



Tel: 1-631-559-9269 1-516-512-3133

Email: info@creative-biomart.com Fax: 1-631-938-8127

45-1 Ramsey Road, Shirley, NY 11967, USA